

OVER 60?

Secure this property
for up to **59% less!**



Price

£900,000

Freehold

5x  3x  1x 

Manor Rise, Bearsted, Maidstone, Kent,

ME14

Wards

Helping you move forwards



Main features

- **Generously proportioned throughout in highly desirable village setting**
- **Stunning private and established rear garden**
- **Large garage with workshop and storage**
- **Sizeable and flexible accommodation with office**
- **Double bedrooms and bathrooms to both floors**

Accommodation

GROUND FLOOR

Hallway: 16'4 x 13'2 (4.98m x 4.02m)
 Cloakroom: 8'3 x 6'6 (2.52m x 1.98m)
 Lounge: 14'6 x 11'7 (4.42m x 3.53m)
 Dining Area: 12'2 x 12'0 (3.71m x 3.66m)
 Kitchen: 12'5 x 10'6 (3.79m x 3.20m)
 Bathroom : 8'3 x 6'6 (2.52m x 1.98m)
 Bedroom 4/Study : 11'9 x 8'7 (3.58m x 2.62m)
 Bedroom 5: 14'2 x 12'2 (4.32m x 3.71m)
 Conservatory: 21'5 x 19'7 (6.53m x 5.97m)

FIRST FLOOR

Landing: 17'10 x 12'7 (5.44m x 3.84m)
 Bedroom 1: 17'5 x 11'6 (5.31m x 3.51m)
 En-Suite Bathroom: 11'5 x 6'6 (3.48m x 1.98m)
 Bedroom 3 : 13'6 x 11'8 (4.12m x 3.56m)
 Bedroom 2 : 17'5 x 14'0 (5.31m x 4.27m)
 Shower Room: 6'3 x 5'2 (1.91m x 1.58m)

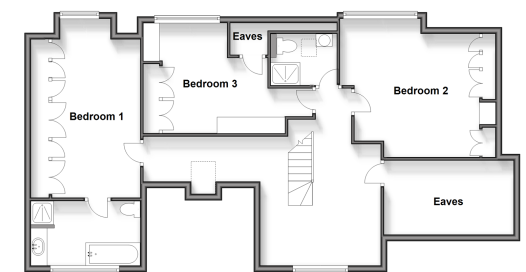
OUTSIDE

Rear Garden
 Garage : 27'7 x 11'4 (8.41m x 3.46m)
 Off Road Parking

Ground Floor
 Approx. 147.0 sq. metres (1592.5 sq. feet)



First Floor
 Approx. 84.5 sq. metres (909.8 sq. feet)



Call Bearsted - 01622 730955 ■ wardsofkent.co.uk

- If buying to let, the energy rating will need to be improved to at least 'E' rating before you can let the property
- Appliances & services are untested, dimensions are approximate and floor plans are not to scale

- Legal advice should be taken to verify fixtures/fittings, planning, alterations and/or lease details
- Through a Homewise Home For Life Plan people aged 60+ can secure this property for up to 59% less, by purchasing a Lifetime Lease.



12327735/20240523/SG/MC