

OVER 60?

Secure this property
for up to **59% less!**



Price

£625,000

Freehold

4x  2x  3x 

Roseacre Lane, Bearsted, Maidstone, Kent,

ME14

Wards

Helping you move forwards



Main features

- Generously proportioned with additional side and rear extension
- Study indoors plus large garden office
- Garage for storage leading to patio
- Fabulous mature and private garden to rear
- Central village location within easy reach of schools, shops, village green and rail links

Accommodation

GROUND FLOOR

Entrance Hall

Office: 10'1 x 8'2 (3.08m x 2.49m)
 Lounge: 17'2 x 12'2 (5.24m x 3.71m)
 Dining Area: 16'3 x 9'8 (4.96m x 2.95m)
 Utility Area: 12'7 x 5'11 (3.84m x 1.80m)
 Kitchen: 24'5 x 11'6 (7.45m x 3.51m)
 Cloakroom: 6'11 x 3'8 (2.11m x 1.12m)

FIRST FLOOR

Landing

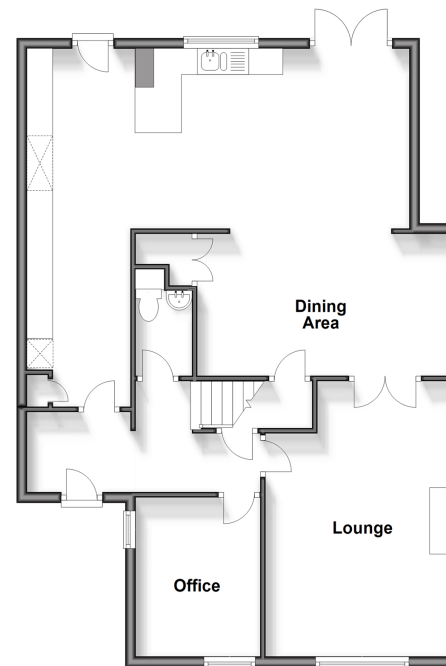
Bathroom: 8'8 x 5'4 (2.64m x 1.63m)
 Bedroom 1: 13'9 x 11'7 (4.19m x 3.53m)
 Jack & Jill En-suite Bathroom: 11'4 x 9'6 (3.46m x 2.90m)
 Bedroom 2: 18'9 x 9'2 (5.72m x 2.80m)
 Bedroom 3: 14'8 x 11'5 (4.47m x 3.48m)
 Bedroom 4: 10'10 x 8'9 (3.30m x 2.67m)

OUTSIDE

Front and Rear Gardens
 Garden Office: 16'0 x 11'5 (4.88m x 3.48m)
 Off Road Parking

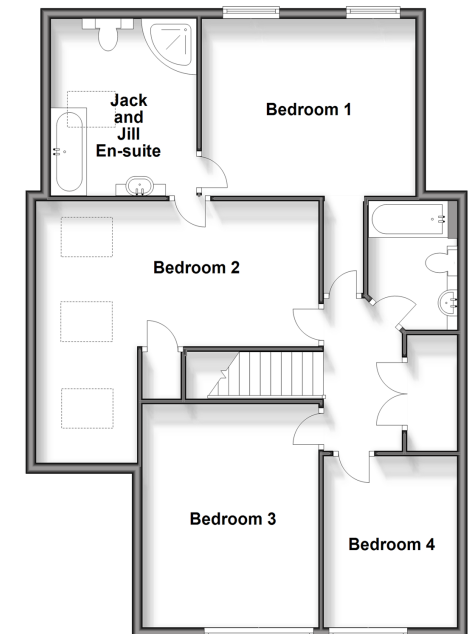
Ground Floor

Approx. 86.7 sq. metres (933.4 sq. feet)



First Floor

Approx. 85.9 sq. metres (924.9 sq. feet)



Call Bearsted - 01622 730955 ■ wardsofkent.co.uk

■ Legal advice should be taken to verify fixtures/fittings, planning, alterations and/or lease details
 ■ Through a Homewise Home For Life Plan people aged 60+ can secure this property for up to 59% less, by purchasing a Lifetime Lease.

■ Appliances & services are untested, dimensions are approximate and floor plans are not to scale



12323411/20240725/MS/MC