



Price
£400,000

Freehold

4x  3x  1x 

**Colyn Drive, Maidstone,
Kent, ME15**

OVER 60?

Secure this property
for up to **59% less!**

Wards
Helping you move forwards



Main features

- **Superb modern condition**
- **2 x en-suites to double bedrooms plus family bathroom**
- **Detached garage plus ample parking**
- **Modern development close to schools and shops**
- **Accommodation over 3 floors providing generous and flexible space throughout**

Accommodation

GROUND FLOOR

Entrance Hall: 14'7 x 7'8 (4.45m x 2.34m)
 Cloakroom: 6'0 x 3'3 (1.83m x 0.99m)
 Kitchen/Diner: 18'5 x 7'11 (5.62m x 2.41m)
 Lounge: 15'5 x 10'11 (4.70m x 3.33m)

FIRST FLOOR

Landing
 Bedroom 2: 10'5 x 8'5 (3.18m x 2.57m)
 En-suite Shower Room: 7'2 x 6'3 (2.19m x 1.91m)
 Bedroom 3: 11'0 x 8'10 (3.36m x 2.69m)
 Bedroom 4: 11'8 x 6'11 (3.56m x 2.11m)
 Bathroom: 6'10 x 6'1 (2.08m x 1.86m)

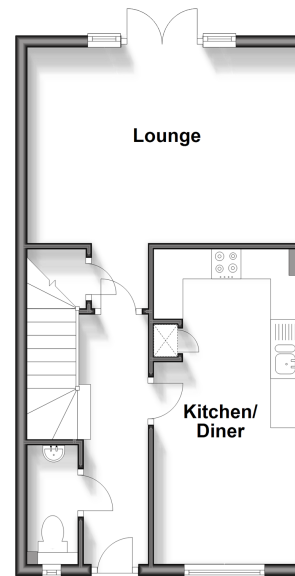
SECOND FLOOR

Landing
 Bedroom 1: 21'6 x 11'9 (6.56m x 3.58m)
 En-suite Shower Room: 9'4 x 4'9 (2.85m x 1.45m)

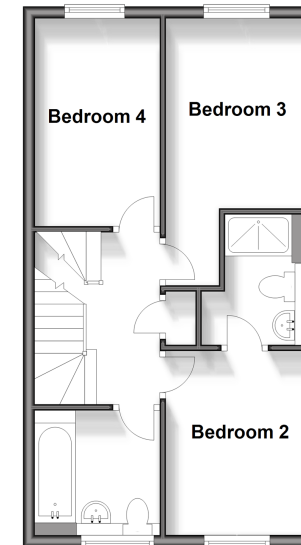
OUTSIDE

Front and Rear Gardens
 Detached Garage
 Off Road Parking

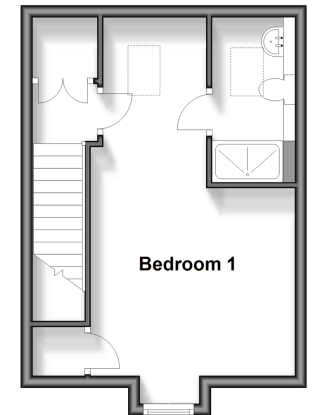
Ground Floor
 Approx. 41.2 sq. metres (443.9 sq. feet)



First Floor
 Approx. 40.8 sq. metres (439.4 sq. feet)



Second Floor
 Approx. 27.7 sq. metres (298.0 sq. feet)



Call Bearsted - 01622 730955 ■ wardsofkennt.co.uk

■ Legal advice should be taken to verify fixtures/fittings, planning, alterations and/or lease details
 ■ Through a Homewise Home For Life Plan people aged 60+ can secure this property for up to 59% less, by purchasing a Lifetime Lease.

■ Appliances & services are untested, dimensions are approximate and floor plans are not to scale



12328838/20240423/SG/MC