



**Guide Price**  
**£360,000**

**Freehold**

2x  1x  2x 

**Fauchons Lane,  
Bearsted, Maidstone,  
Kent, ME14**

**OVER 60?**

Secure this property  
for up to **59% less!**

*Wards*  
Helping you move forwards



## Main features

- Spacious single storey dwelling in central Bearsted with conservatory
- Garage and driveway to front
- Enclosed courtyard garden to front and charming private garden to rear
- Easy reach of local amenities, doctors and popular schools
- Close to village green and rail links
- Offered chain-free

## Accommodation

### GROUND FLOOR

- Entrance Hall: 6'6 x 3'5 (1.98m x 1.04m)
- Hallway: 6'0 x 3'10 (1.83m x 1.17m)
- Utility Room: 7'6 x 6'4 (2.29m x 1.93m)
- Kitchen: 11'5 x 7'0 (3.48m x 2.14m)
- Lounge/Diner: 23'5 x 16'6 (7.14m x 5.03m)
- Conservatory: 11'11 x 9'3 (3.63m x 2.82m)
- Office / Lobby: 13'4 x 6'1 (4.07m x 1.86m)
- Bedroom 1: 11'10 x 10'6 up to fitted wardrobes (3.61m x 3.20m)
- Bedroom 2: 12'0 x 11'7 (3.66m x 3.53m)
- Shower Room: 7'2 x 5'9 (2.19m x 1.75m)

### OUTBUILDINGS

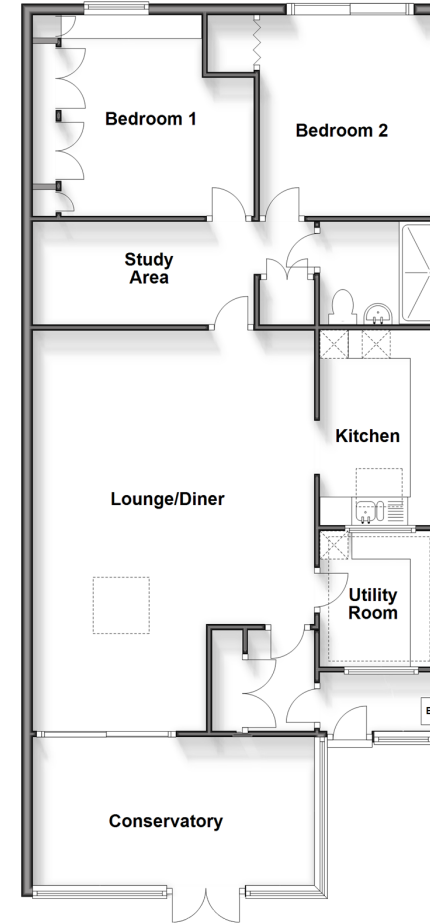
- Garage
- Workshop: 9'9 x 8'8 (2.97m x 2.64m)

### OUTSIDE

- Front Courtyard Garden
- Rear Garden
- Off Road Parking

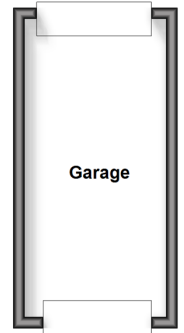
### Ground Floor

Approx. 106.3 sq. metres (1144.5 sq. feet)



### Outbuilding

Approx. 13.4 sq. metres (144.5 sq. feet)



**Call Bearsted - 01622 730955 ■ [wardsof Kent.co.uk](http://wardsof Kent.co.uk)**

- Legal advice should be taken to verify fixtures/fittings, planning, alterations and/or lease details
- Appliances & services are untested, dimensions are approximate and floor plans are not to scale
- Through a Homewise Home For Life Plan people aged 60+ can secure this property for up to 59% less, by purchasing a Lifetime Lease.



12328327/20240820/SG/JW