



OVER 60?

Secure this property
for up to **59% less!**

Price

£550,000

Leasehold

2x  2x  1x 

**Eylesden Court,
Bearsted, Maidstone,
Kent, ME14**

Wards
Helping you move forwards



Main features

- Situated in a select retirement development in the heart of the village
- Attractive courtyard setting
- 2 En-suite Bathrooms and cloakroom
- Close to local facilities including pub, restaurants and mainline station
- No onward chain

Accommodation

GROUND FLOOR

Entrance Hall: 9'1 x 8'4 (2.77m x 2.54m)

Cloakroom

Lounge Area: 22'1 x 12'3 (6.74m x 3.74m)

Dining Area: 14'4 x 8'1 (4.37m x 2.47m)

Kitchen: 12'1 x 9'11 (3.69m x 3.02m)

Bedroom 1: 14'5 x 10'0 (4.40m x 3.05m)

En-suite Bathroom: 9'1 x 7'8 (2.77m x 2.34m)

FIRST FLOOR

Landing: 12'2 x 10'1 (3.71m x 3.08m)

Bedroom 2: 12'10 x 12'3 (3.91m x 3.74m)

En-suite Shower Room: 7'9 x 7'3 (2.36m x 2.21m)

OUTSIDE

Courtyard and Rear Garden

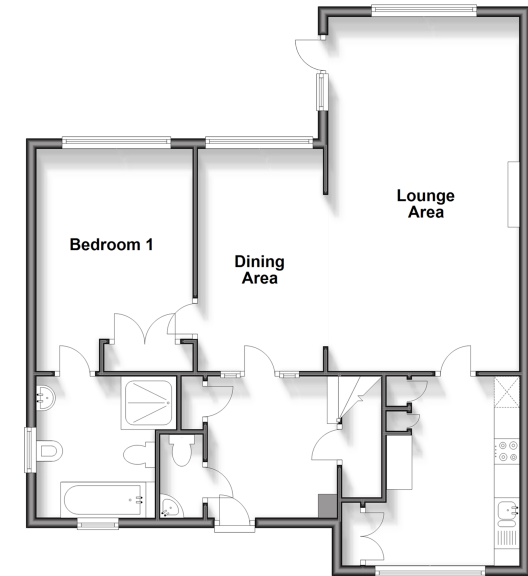
Communal Garden

Garage

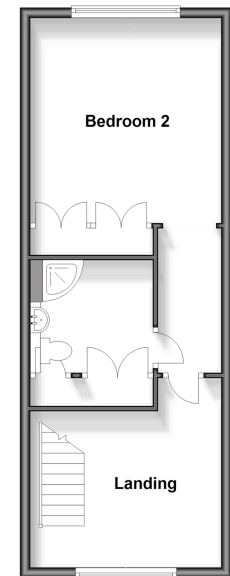
Call Bearsted - 01622 730955 ■ wardsof Kent.co.uk

- Legal advice should be taken to verify fixtures/fittings, planning, alterations and/or lease details
- Appliances & services are untested, dimensions are approximate and floor plans are not to scale
- Through a Homewise Home For Life Plan people aged 60+ can secure this property for up to 59% less, by purchasing a Lifetime Lease.

Ground Floor
Approx. 81.9 sq. metres (881.6 sq. feet)



First Floor
Approx. 40.4 sq. metres (434.7 sq. feet)



12328730/20231207/SG/JW