



Price
£485,000

Freehold

4x  3x  1x 

**The Street, Detling,
Maidstone, Kent, ME14**

OVER 60?

Secure this property
for up to **59% less!**

Wards
Helping you move forwards



Main features

- Stunning condition throughout
- Double bedrooms with 2 en-suites plus family bathroom and ground floor cloakroom
- Central village position close to pub and shop
- Charming private rear garden
- Accommodation over 3 floors with parking off road to the front

Accommodation

GROUND FLOOR

Entrance Hall
 Cloakroom: 7'7 x 3'3 (2.31m x 0.99m)
 Kitchen: 11'3 x 11'1 (3.43m x 3.38m)
 Lounge/Diner: 18'9 x 18'2 (5.72m x 5.54m)

FIRST FLOOR

Landing
 Bedroom 2: 13'8 x 11'5 (4.17m x 3.48m)
 En-Suite Shower Room: 8'6 x 4'9 (2.59m x 1.45m)
 Bedroom 3: 10'9 x 10'8 (3.28m x 3.25m)
 Bedroom 4: 12'5 x 6'9 up to fitted wardrobes (3.79m x 2.06m)
 Bathroom: 11'0 x 7'6 (3.36m x 2.29m)

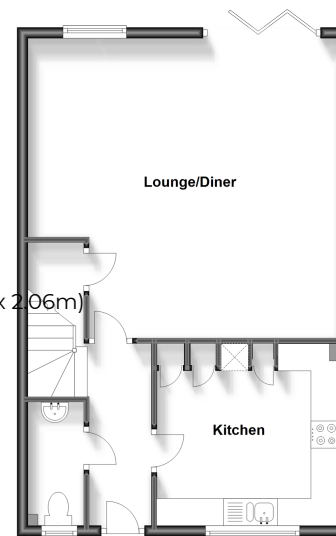
SECOND FLOOR

Bedroom 1: 17'7 x 12'0 (5.36m x 3.66m)
 En-Suite Shower room: 10'0 x 8'5 (3.05m x 2.57m)

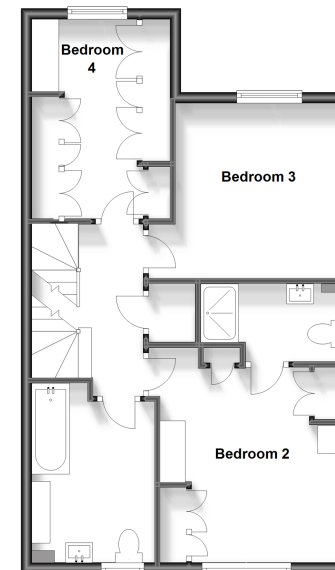
OUTSIDE

Off Road Parking
 Rear Garden
 Shed

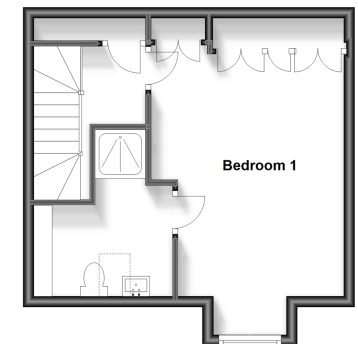
Ground Floor
 Approx. 51.6 sq. metres (554.9 sq. feet)



First Floor
 Approx. 53.0 sq. metres (570.2 sq. feet)



Second Floor
 Approx. 31.2 sq. metres (336.2 sq. feet)



Call Bearsted - 01622 730955 ■ wardsofkennt.co.uk

■ Legal advice should be taken to verify fixtures/fittings, planning, alterations and/or lease details
 ■ Through a Homewise Home For Life Plan people aged 60+ can secure this property for up to 59% less, by purchasing a Lifetime Lease.

■ Appliances & services are untested, dimensions are approximate and floor plans are not to scale



12328664/20230927/MC/MC