

OVER 60?

Secure this property
for up to **59% less!**



Price

£550,000

Freehold

3x  1x  2x 

Willington Street, Maidstone, Kent, ME15

Wards

Helping you move forwards



Ground Floor
Approx. 118.9 sq. metres (1279.4 sq. feet)

Main features

- **Character house with opportunity to extend and improve subject to consents**
- **Large rear garden**
- **Excellent off road parking including 2 garages**
- **Extended and generous accommodation**
- **Easy access to schools in Bearsted and Maidstone alike**

Accommodation

GROUND FLOOR

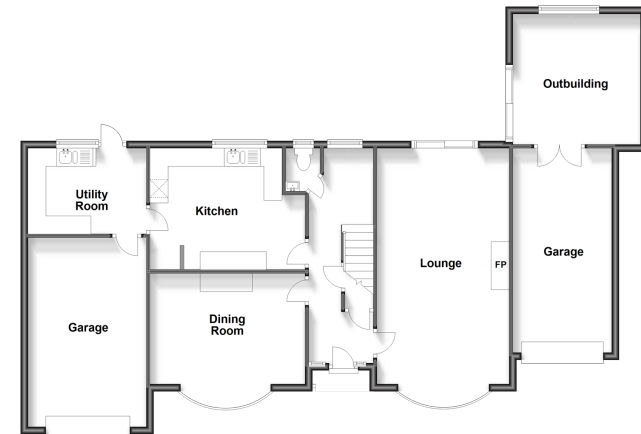
- Entrance Hall
- Cloakroom
- Utility Room: 10'7 x 7'8 (3.23m x 2.34m)
- Kitchen: 13'10 x 10'8 (4.22m x 3.25m)
- Dining Room: 14'4 x 13'1 (4.37m x 3.99m)
- Lounge: 24'6 x 11'11 (7.47m x 3.63m)

FIRST FLOOR

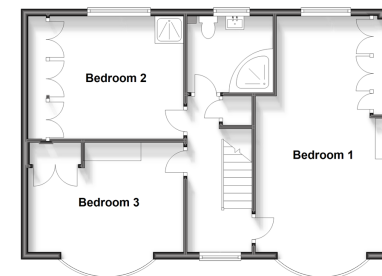
- Landing
- Bedroom 1: 28'7 x 11'11 (8.72m x 3.63m)
- Bedroom 2: 14'1 x 12'7 (4.30m x 3.84m)
- Bedroom 3: 11'11 x 11'1 (3.63m x 3.38m)
- Shower Room: 7'8 x 6'9 (2.34m x 2.06m)

OUTSIDE

- 2 x Garages
- Off Road Parking
- Rear Garden
- Outbuilding



First Floor
Approx. 65.1 sq. metres (701.3 sq. feet)



Call Bearsted - 01622 730955 ■ wardsofkent.co.uk

■ Legal advice should be taken to verify fixtures/fittings, planning, alterations and/or lease details
 ■ Through a Homewise Home For Life Plan people aged 60+ can secure this property for up to 59% less, by purchasing a Lifetime Lease.

■ Appliances & services are untested, dimensions are approximate and floor plans are not to scale



12328090/20240514/SG/MC