



Price
£525,000

Freehold

3x  2x  3x 

**Yeoman Park, Bearsted,
Maidstone, Kent, ME15**

OVER 60?

Secure this property
for up to **59% less!**

Wards
Helping you move forwards



Main features

- Individually built, detached family home situated on the periphery of a sought after close
- Main bedroom has attractive en-suite shower
- Multiple living areas
- Downstairs cloakroom
- Garden to side and rear

Accommodation

GROUND FLOOR

Hallway

Lounge: 14'0 x 12'10 (4.27m x 3.91m)
 Dining Room: 11'0 x 9'11 (3.36m x 3.02m)
 Kitchen: 10'11 x 10'2 (3.33m x 3.10m)
 Study: 7'5 x 7'3 (2.26m x 2.21m)
 Cloakroom

FIRST FLOOR

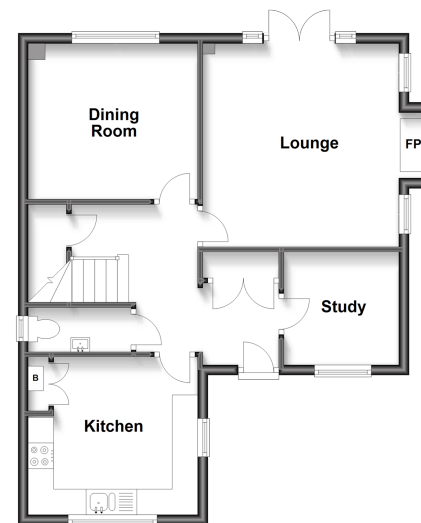
Landing

Bedroom 1: 12'8 x 11'5 (3.86m x 3.48m)
 En-suite Shower Room: 6'3 x 5'1 (1.91m x 1.55m)
 Bedroom 2: 12'8 x 9'0 (3.86m x 2.75m)
 Bedroom 3: 11'0 x 10'8 (3.36m x 3.25m)
 Bathroom: 10'8 x 6'0 (3.25m x 1.83m)

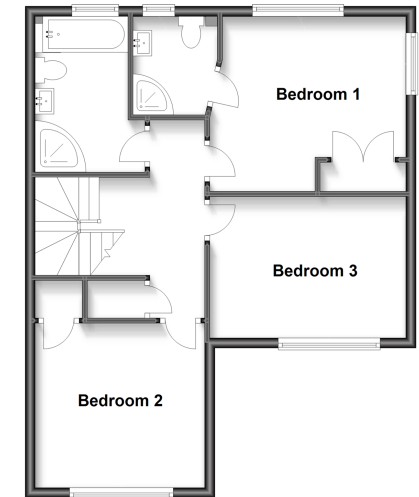
OUTSIDE

Rear and Side Gardens
 Driveway

Ground Floor
 Approx. 56.2 sq. metres (604.9 sq. feet)



First Floor
 Approx. 55.5 sq. metres (597.8 sq. feet)



Call Bearsted - 01622 730955 ■ wardsofkent.co.uk

■ Legal advice should be taken to verify fixtures/fittings, planning, alterations and/or lease details
 ■ Through a Homewise Home For Life Plan people aged 60+ can secure this property for up to 59% less, by purchasing a Lifetime Lease.

■ Appliances & services are untested, dimensions are approximate and floor plans are not to scale



12328382/20230710/SG/JW