



OVER 60?

Secure this property
for up to **59% less!**

Guide Price
£450,000

Freehold

3x  1x  2x 

**Oaklands Road,
Bexleyheath, Kent, DA6**

Wards
Helping you move forwards



Main features

- A semi-detached family house
- Offered for sale with no chain
- Potential for off road parking
- Generously sized rooms with high ceilings, period style features and a real fire for the Autumn chills
- Set in a tree-lined road just off the Broadway, close to everything you need for family life

Accommodation

GROUND FLOOR

Entrance Hall

Lounge: 15'5 x 11'4 (4.70m x 3.46m)

Dining Room: 12'9 x 10'4 (3.89m x 3.15m)

Kitchen: 8'0 x 7'4 (2.44m x 2.24m)

FIRST FLOOR

Landing

Bedroom 1: 15'0 x 11'0 (4.58m x 3.36m)

Bedroom 2: 12'9 x 10'4 (3.89m x 3.15m)

Bedroom 3: 8'9 x 8'2 (2.67m x 2.49m)

Bathroom

Separate Toilet

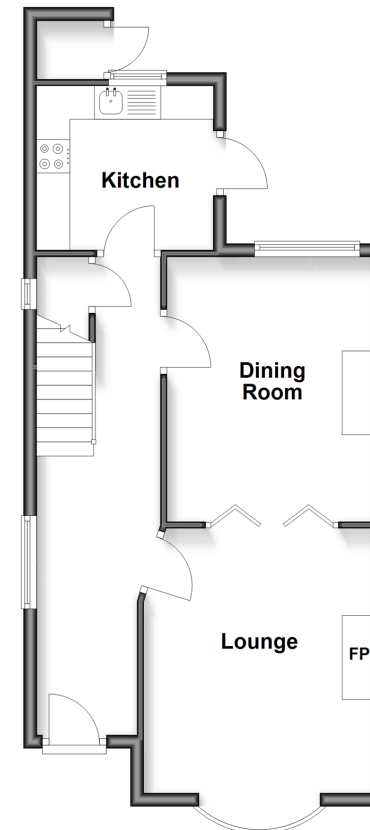
OUTSIDE

Garden to Front

Garden to Rear

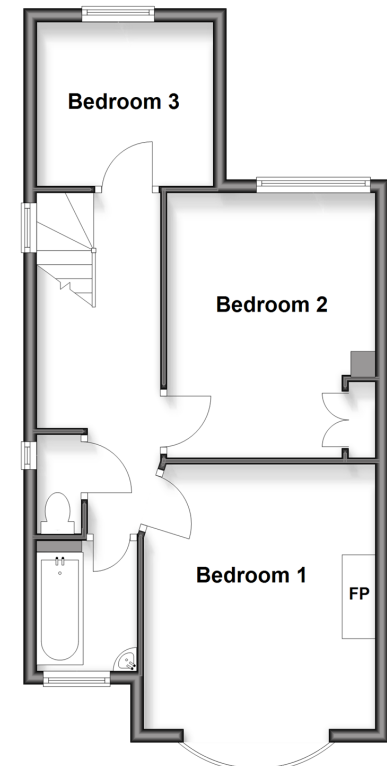
Ground Floor

Approx. 47.4 sq. metres (510.4 sq. feet)



First Floor

Approx. 46.7 sq. metres (502.2 sq. feet)



Call Barnehurst - 01322 335525 ■ wardsofkent.co.uk

- Legal advice should be taken to verify fixtures/fittings, planning, alterations and/or lease details
- Appliances & services are untested, dimensions are approximate and floor plans are not to scale
- Through a Homewise Home For Life Plan people aged 60+ can secure this property for up to 50% less, by purchasing a Lifetime Lease.



14711250/20251031/GL/GL