



**Price**

**£450,000**

**Freehold**

4x  2x  2x 

**Thames Road, Crayford,  
Dartford, Kent, DA1**

*Wards*  
Helping you move forwards





## Main features

- A semi detached family home
- Popular schools nearby
- Offered for sale with no chain
- Newly refurbished throughout with a brand new kitchen and bathroom
- Generous accommodation as all the bedrooms are doubles

## Accommodation

### GROUND FLOOR

Entrance Hall

Bathroom

Kitchen: 11'9 x 8'9 (3.58m x 2.67m)

Utility Room

Lounge: 15'9 x 11'9 (4.80m x 3.58m)

Dining Room: 11'7 x 9'9 (3.53m x 2.97m)

### FIRST FLOOR

landing

Bedroom 1: 11'9 x 9'3 (3.58m x 2.82m)

Bedroom 2: 11'9 x 11'0 (3.58m x 3.36m)

Bedroom 3: 11'6 x 9'3 (3.51m x 2.82m)

Bedroom 4: 10'2 x 10'0 (3.10m x 3.05m)

Shower Room

### OUTSIDE

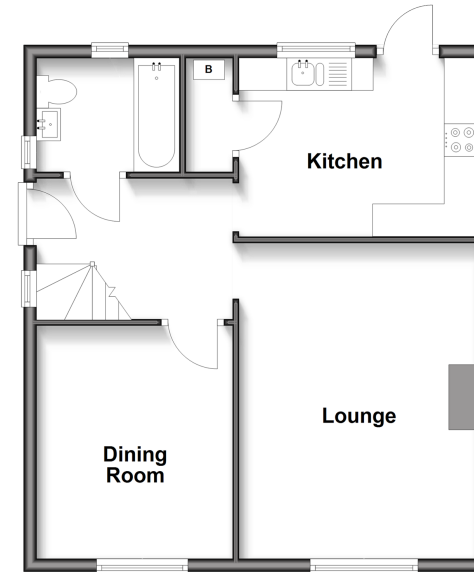
Front Garden

Rear Garden

Driveway

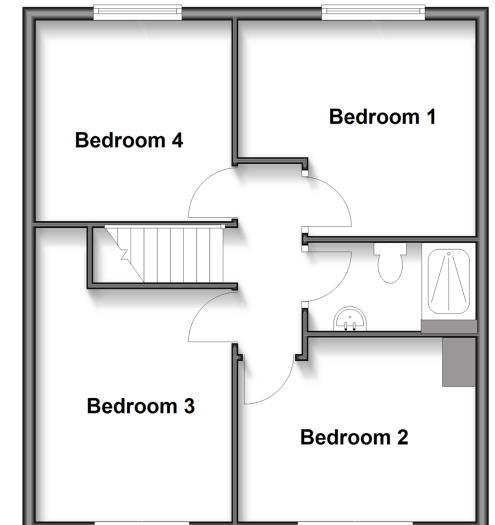
### Ground Floor

Approx. 52.2 sq. metres (561.7 sq. feet)



### First Floor

Approx. 52.2 sq. metres (561.7 sq. feet)



**Call Barnehurst - 01322 335525 ■ [wardsofkennt.co.uk](http://wardsofkennt.co.uk)**

- Legal advice should be taken to verify fixtures/fittings, planning, alterations and/or lease details
- Appliances & services are untested, dimensions are approximate and floor plans are not to scale



14710965/20250514/GL/JH