



**OVER 60?**

Secure this property  
for up to **59% less!**

**Price**

**£250,000**

**Leasehold**

2x  1x  1x 

**Francis Court, Macarthur  
Close, Erith, Kent, DA8**

*Wards*  
Helping you move forwards



## Main features

- Purpose built ground floor flat
- Allocated parking space and visitors parking
- Modern kitchen and shower room
- Direct access onto communal gardens which overlook the river
- Walking distance of the town centre and rail station, perfect for commuters

## Accommodation

### GROUND FLOOR

#### Hallway

Lounge/Diner: 20'1 x 10'3 (6.13m x 3.13m)

Kitchen: 8'3 x 8'1 (2.52m x 2.47m)

Bedroom 1: 13'8 x 8'0 (4.17m x 2.44m)

Bedroom 2: 14'0 x 9'5 (4.27m x 2.87m)

#### Shower Room

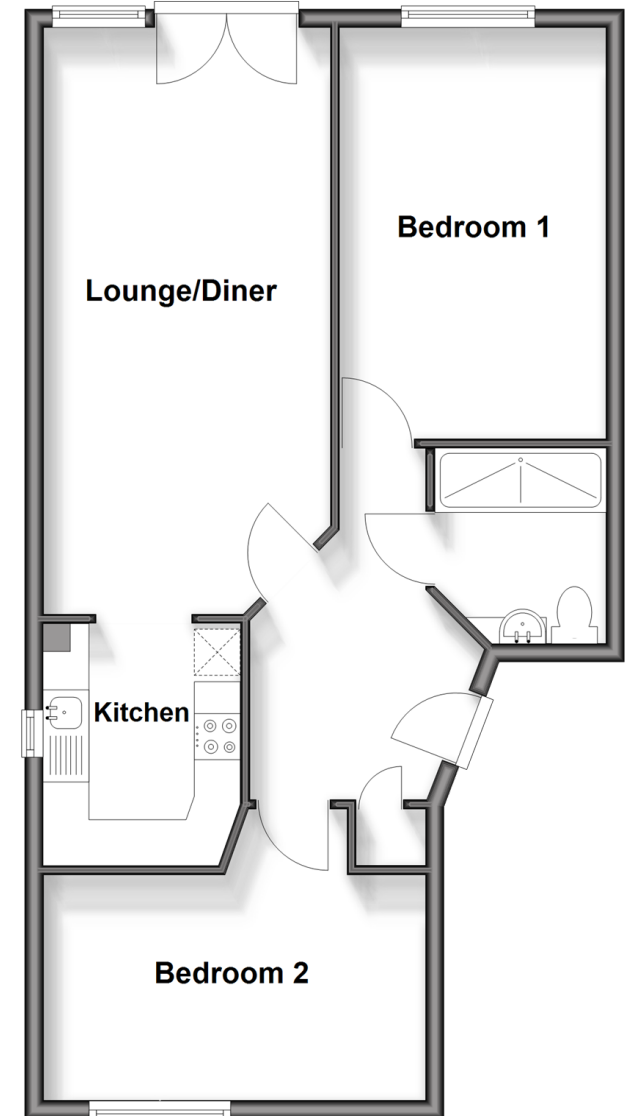
### OUTSIDE

#### Communal Garden

#### Allocated Parking Space

## Ground Floor

Approx. 62.3 sq. metres (671.0 sq. feet)



**Call Barnehurst - 01322 335525 ■ [wardsofkent.co.uk](http://wardsofkent.co.uk)**

- Legal advice should be taken to verify fixtures/fittings, planning, alterations and/or lease details
- Appliances & services are untested, dimensions are approximate and floor plans are not to scale
- Through a Homewise Home For Life Plan people aged 60+ can secure this property for up to 59% less, by purchasing a Lifetime Lease.



14711118/20250604/JS/JH