



Price
£725,000

Freehold

4x  3x  3x 

**Knowle Avenue,
Bexleyheath, Kent, DA7**

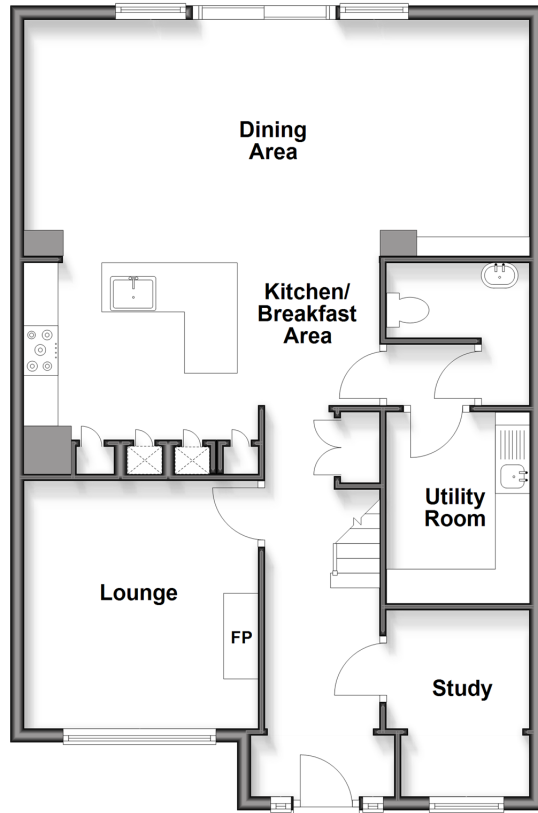
OVER 60?

Secure this property
for up to **59% less!**

Wards
Helping you move forwards

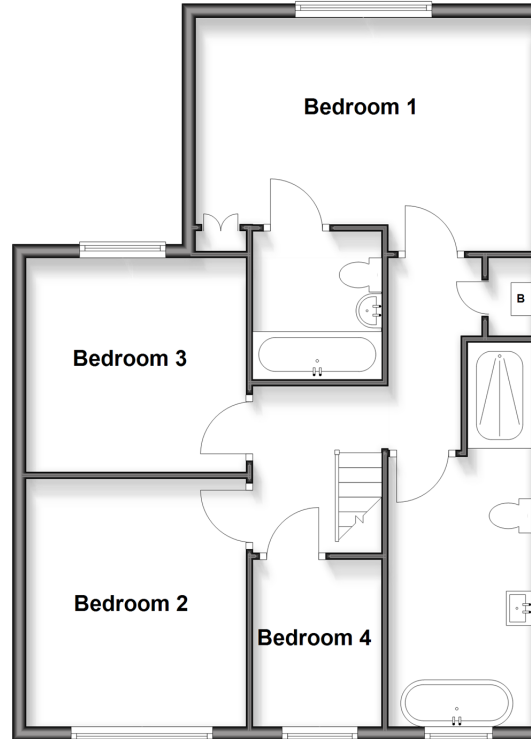
Ground Floor

Approx. 80.6 sq. metres (867.9 sq. feet)



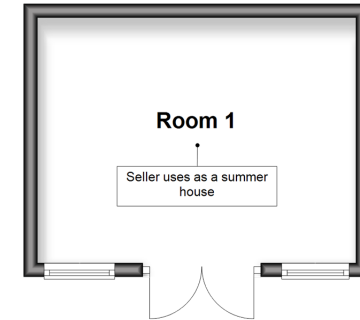
First Floor

Approx. 67.9 sq. metres (730.5 sq. feet)



Outbuilding

Approx. 16.7 sq. metres (180.0 sq. feet)



Accommodation

GROUND FLOOR

Entrance Hall
Office/Study: 8'9 x 6'0 (2.67m x 1.83m)
Lounge: 12'0 x 11'0 (3.66m x 3.36m)
Kitchen: 16'5 x 9'0 (5.01m x 2.75m)
Dining/Family Area: 23'3 x 11'3 (7.09m x 3.43m)
Inner Lobby
Cloakroom
Utility Room: 9'4 x 6'0 (2.85m x 1.83m)

FIRST FLOOR

Landing
Bedroom 1: 13'9 x 13'4 (4.19m x 4.07m)
En-Suite Bathroom
Bedroom 2: 12'1 x 10'8 (3.69m x 3.25m)
Bedroom 3: 10'3 x 8'3 (3.13m x 2.52m)
Bedroom 4: 8'0 x 6'5 (2.44m x 1.96m)
Family Bathroom

OUTSIDE

Driveway
Rear Garden
Summerhouse/Cabin: 15'3 x 12'0 (4.65m x 3.66m)



Main features

- Generously extended family home
- Beautifully appointed throughout
- Sumptuous family bathroom; perfect for relaxation
- Situated in the popular Pantiles area, with excellent access to the Elizabeth Line/Abbey Road
- Low maintenance rear garden complete with summerhouse/cabin



Nearest Schools

Primary Schools: Bedonwell Junior School 0.2 miles, Belmont Primary 0.5 miles, St Thomas More Catholic Primary 0.6 miles
Secondary Schools: Woodside School 1.1 miles, Bexleyheath School 1.1 miles, Welling School 1.1 miles



Transport Information

Train Stations: Bexleyheath 0.9 miles, Abbey Wood 1.1 miles, Belvedere 1.1 miles



Address

Knowle Avenue, Bexleyheath, Kent, DA7



Directions

For directions to this property please contact us.



Wards
Helping you move forwards

Call Barnehurst Branch 01322 335525 ■ wardsofkent.co.uk



■ Legal advice should be taken to verify fixtures/fittings, planning, alterations and/or lease details ■ Appliances & services are untested, dimensions are approximate and floor plans are not to scale
■ Through a Homewise Home For Life Plan people aged 60+ can secure this property for up to 59% less, by purchasing a Lifetime Lease.



14711070/20250415/GL/GL