



OVER 60?

Secure this property
for up to **59% less!**

Price

£240,000

Leasehold

1x  1x  1x 

**Peridot Court, Slade
Green Road, Erith, Kent,
DA8**

Wards
Helping you move forwards



Main features

- Second floor flat with modern finishes throughout
- Large balcony with outdoor seating area extends the living space
- Easy access to motorway links and the Elizabeth line for direct connections into London
- Secure allocated parking
- Open plan lounge/diner and kitchen area makes for a perfect space for entertaining or relaxing

Accommodation

SECOND FLOOR

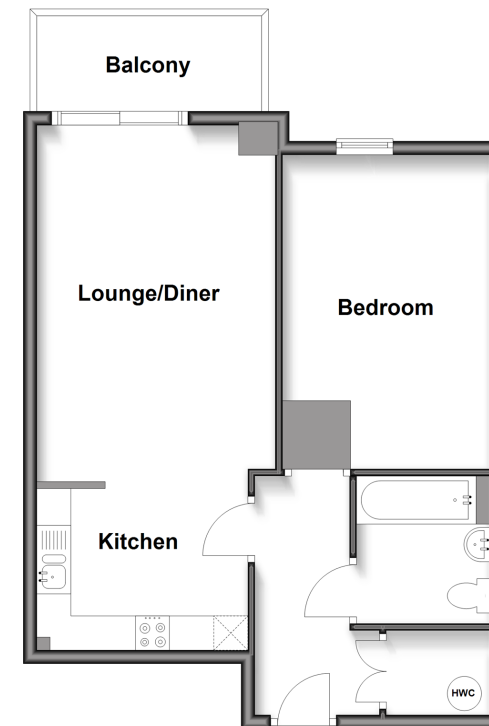
Hallway
 Kitchen: 10'0 x 7'0 (3.05m x 2.14m)
 Lounge/Diner: 17'0 x 11'0 (5.19m x 3.36m)
 Balcony
 Bedroom: 15'10 x 10'0 (4.83m x 3.05m)
 Bathroom

OUTSIDE

Allocated Parking

Second Floor

Approx. 52.9 sq. metres (569.0 sq. feet)



Call Barnehurst - 01322 335525 ■ wardsof Kent.co.uk

- The seller is a person connected with Wards as defined in the Estate Agents Act 1979
- Appliances & services are untested, dimensions are approximate and floor plans are not to scale

- Legal advice should be taken to verify fixtures/fittings, planning, alterations and/or lease details
- Through a Homewise Home For Life Plan people aged 60+ can secure this property for up to 59% less, by purchasing a Lifetime Lease.