



**Price**  
**£500,000**

**Freehold**

4x  2x  1x 

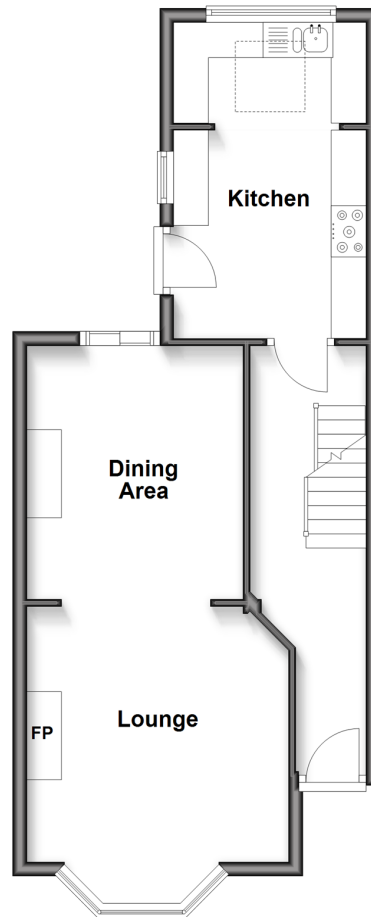
**Old Road, Dartford,  
Kent, DA1**

**OVER 60?**

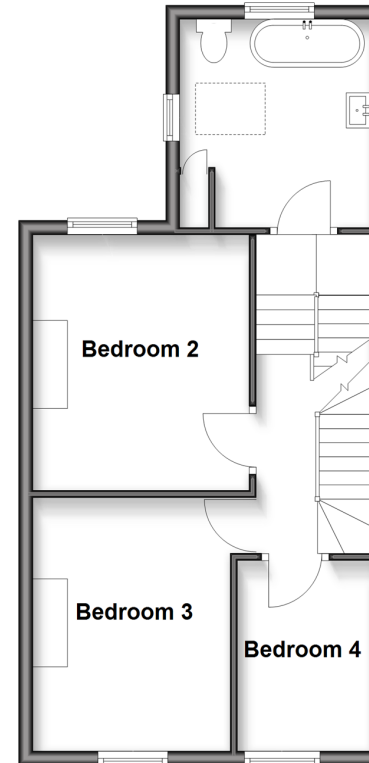
Secure this property  
for up to **59% less!**

*Wards*  
Helping you move forwards

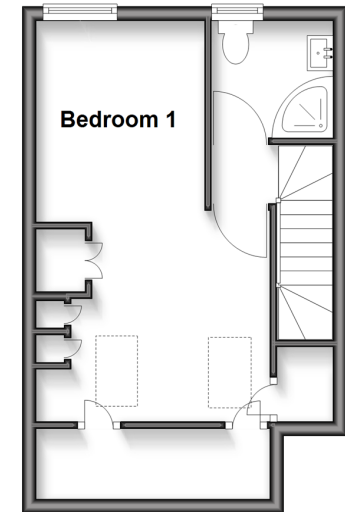
**Ground Floor**  
Approx. 47.6 sq. metres (512.8 sq. feet)



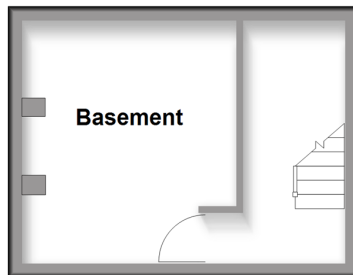
**First Floor**  
Approx. 44.7 sq. metres (480.7 sq. feet)



**Second Floor**  
Approx. 27.7 sq. metres (298.5 sq. feet)



**Basement**  
Approx. 15.7 sq. metres (169.1 sq. feet)



## Accommodation

### GROUND FLOOR

Hallway

Lounge/Dining Area: 26'3 into bay x 10'3 at widest point (8.01m x 3.13m)

Kitchen: 15'0 x 9'0 (4.58m x 2.75m)

### BASEMENT

Basement

### FIRST FLOOR

Bathroom

Bedroom 2: 12'0 x 10'4 (3.66m x 3.15m)

Bedroom 3: 12'0 x 10'0 (3.66m x 3.05m)

Bedroom 4: 9'1 x 6'10 (2.77m x 2.08m)

### SECOND FLOOR

Landing

Bedroom 1: 19'0 x 11'0 (5.80m x 3.36m)

En-Suite Shower Room

### OUTSIDE

Front Garden

Rear Garden





## Main features

- Extended period property oozing charm and character
- Stunning views to the rear over Dartford Heath
- Low maintenance rear garden
- Converted cellar; ideal to use as a home office or studio
- Situated on the Bexleyheath boundary with lots of amenities



### Nearest Schools

Primary: St Joseph's Catholic 0.1 miles, St Paulinus C of E 0.1 miles, Barnes Cray 0.3 miles Secondary: Oakwood 0.3 miles, St Columba's Catholic Boys' 0.8 miles, St Catherine's Catholic Girls' 0.8 miles Further Education: Beths Grammar 1.1 miles, Bexleyheath 1.4 miles



### Transport Information

Train Stations: Crayford 0.4 miles, Barnehurst 1.0 miles, Slade Green 1.1 miles



### Address

Old Road, Dartford, Kent, DA1



### Directions

For directions to this property please contact us.





*Wards*  
Helping you move forwards

Call Barnehurst Branch 01322 335525 ■ [wardsofkent.co.uk](http://wardsofkent.co.uk)



- Legal advice should be taken to verify fixtures/fittings, planning, alterations and/or lease details
- Appliances & services are untested, dimensions are approximate and floor plans are not to scale
- Through a Homewise Home For Life Plan people aged 60+ can secure this property for up to 59% less, by purchasing a Lifetime Lease.



14711047/20250405/JS1/JH