



**Price**  
**£335,000**

**Freehold**

3x  1x  2x 

**Glendale Road, Erith,  
Kent, DA8**

*Wards*  
Helping you move forwards





## Main features

- Victorian terraced house with good sized bedrooms
- Easy access to public transport, including nearby Erith Station - ideal for commuters
- A bright and airy space; ideal for relaxation or hosting guests
- Separate dining room

## Accommodation

### GROUND FLOOR

Hallway

Lounge: 13'8 x 10'6 (4.17m x 3.20m)

Dining Room: 14'3 x 12'4 (4.35m x 3.76m)

Kitchen: 12'4 x 8'9 (3.76m x 2.67m)

Shower Room

### FIRST FLOOR

Landing

Bedroom 1: 14'8 x 12'3 (4.47m x 3.74m)

Bedroom 2: 14'6 x 12'10 (4.42m x 3.91m)

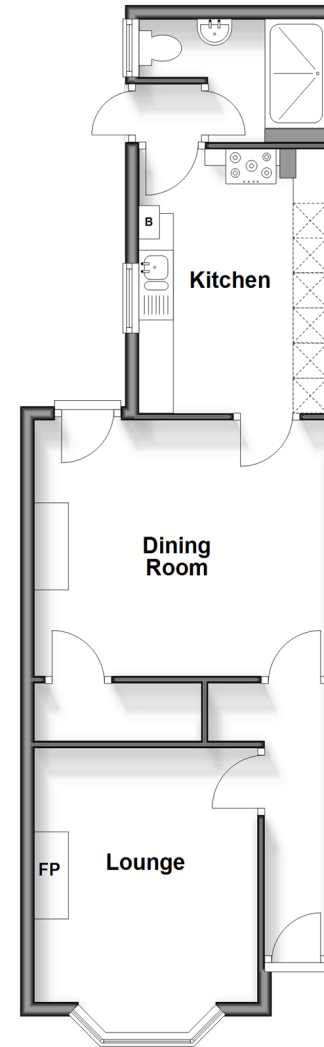
Bedroom 3: 12'5 x 8'9 (3.79m x 2.67m)

### OUTSIDE

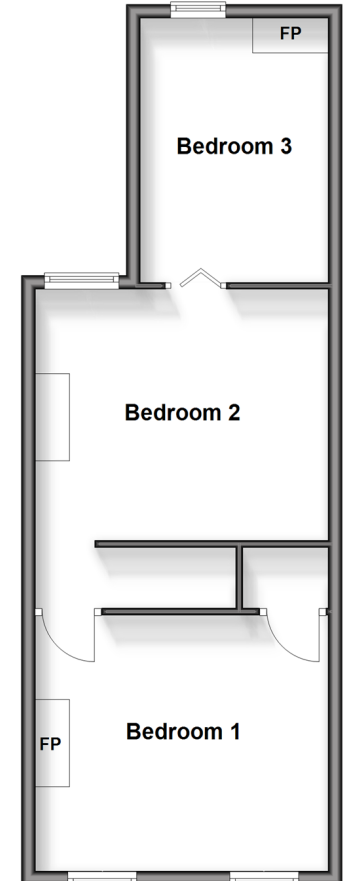
Front Garden

Rear Garden

**Ground Floor**  
Approx. 51.2 sq. metres (551.6 sq. feet)



**First Floor**  
Approx. 46.6 sq. metres (501.6 sq. feet)



**Call Barnehurst - 01322 335525 ■ [wardsofkennt.co.uk](http://wardsofkennt.co.uk)**

- Legal advice should be taken to verify fixtures/fittings, planning, alterations and/or lease details
- Appliances & services are untested, dimensions are approximate and floor plans are not to scale



14711033/20250411/JH/JH