



**Price**  
**£375,000**

**Freehold**

3x  1x  1x 

**Green Place, Dartford,  
Kent, DA1**

*Wards*  
Helping you move forwards



## Main features

- End of terrace house in walking distance to shops, restaurants and 24-hour gyms
- Loft room ideal for office or storage
- Walking distance to Crayford station with links to London
- Peaceful location
- Side access to the tiered rear garden

## Accommodation

### GROUND FLOOR

Porch  
Hallway  
Living Room: 13'4 x 11'0 (4.07m x 3.36m)  
Kitchen: 10'10 x 10'5 (3.30m x 3.18m)  
Bathroom

### FIRST FLOOR

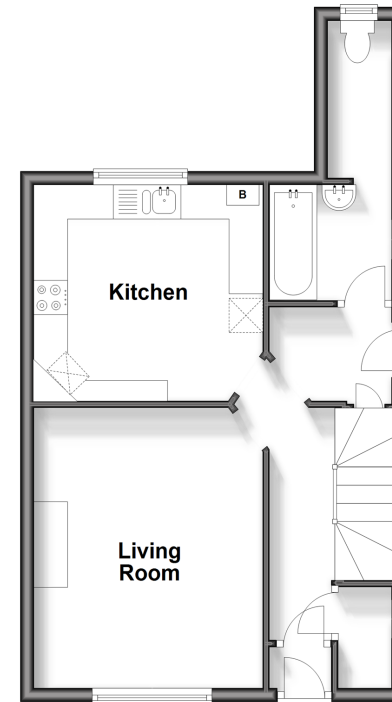
Landing  
Bedroom 1: 17'3 x 13'0 (5.26m x 3.97m)  
Bedroom 2: 10'8 x 8'4 (3.25m x 2.54m)  
Bedroom 3: 8'6 x 6'7 (2.59m x 2.01m)  
Separate Toilet

### OUTSIDE

Garden to Front  
Driveway to Front  
Garden to Rear

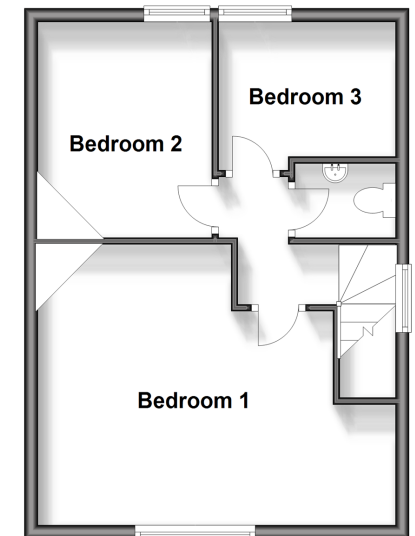
### Ground Floor

Approx. 41.2 sq. metres (443.4 sq. feet)



### First Floor

Approx. 38.9 sq. metres (419.0 sq. feet)



Call Barnehurst - 01322 335525 ■ [wardsofkent.co.uk](http://wardsofkent.co.uk)

■ Legal advice should be taken to verify fixtures/fittings, planning, alterations and/or lease details

■ Appliances & services are untested, dimensions are approximate and floor plans are not to scale



14711016/20250120/AM/AM