

Price

£450,000

Freehold

3x  2x  1x 

**Osborne Road,
Belvedere, Kent, DA17**

Wards
Helping you move forwards

Main features

- Detached bungalow - chain free
- All double bedrooms, one with en-suite shower room
- Beautiful conservatory with garden views
- Within close proximity to highly regarded schools
- Convenient for bus routes to the Elizabeth Line and DLR

Accommodation

GROUND FLOOR

Hallway

Lounge: 17'5 x 10'3 (5.31m x 3.13m)

Conservatory: 9'0 x 7'5 (2.75m x 2.26m)

Kitchen: 11'3 x 6'3 (3.43m x 1.91m)

Bathroom

Bedroom 1: 11'3 x 11'3 (3.43m x 3.43m)

Bedroom 2: 17'5 at widest point x 7'7 (5.31m x 2.31m)

En-suite shower: 5'9 x 3'3 (1.75m x 0.99m)

Bedroom 3: 11'8 x 8'7 (3.56m x 2.62m)

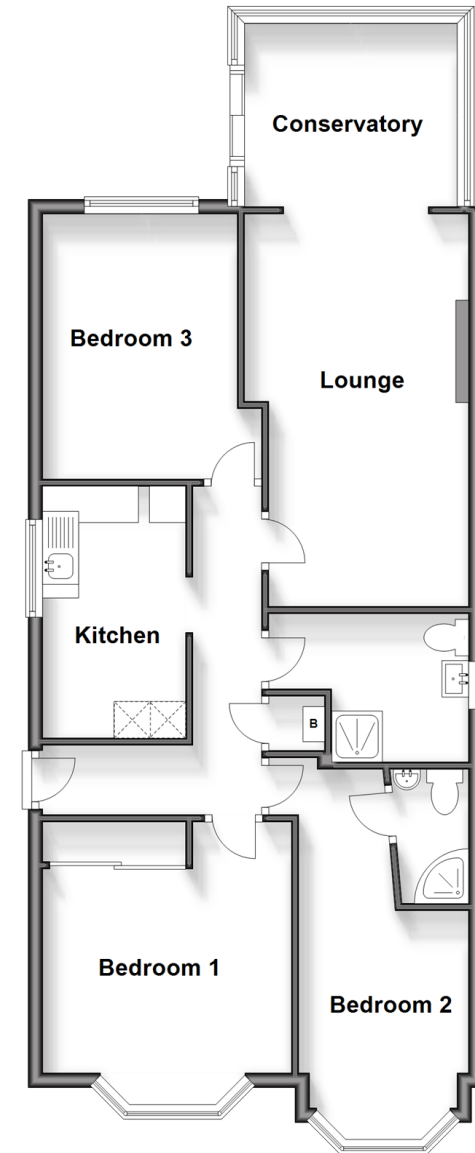
OUTSIDE

Rear Garden

Driveway to Front

Ground Floor

Approx. 79.0 sq. metres (850.6 sq. feet)



Call Barnehurst - 01322 335525 ■ wardsofkent.co.uk

- Legal advice should be taken to verify fixtures/fittings, planning, alterations and/or lease details
- Appliances & services are untested, dimensions are approximate and floor plans are not to scale



14710791/20241230/JH/AM