

Price

£675,000

Freehold

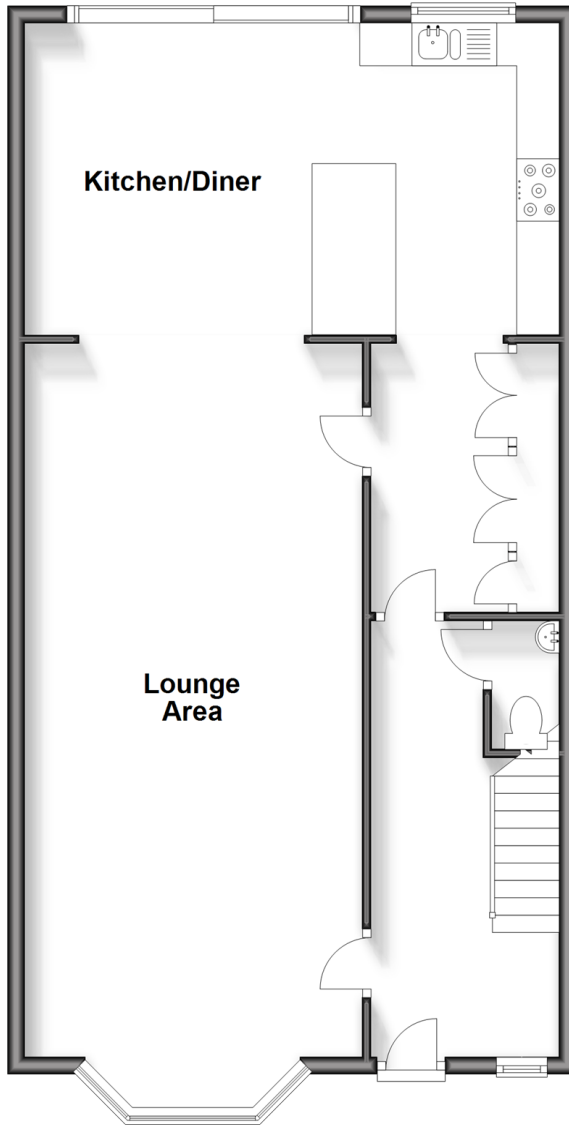
3x  2x  1x 

**Fairford Avenue,
Bexleyheath, Kent, DA7**

Wards
Helping you move forwards

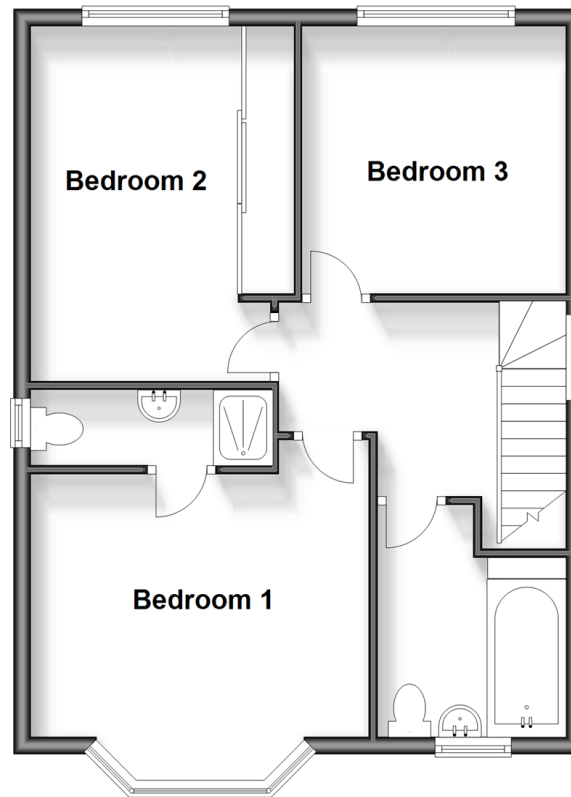
Ground Floor

Approx. 76.5 sq. metres (823.1 sq. feet)



First Floor

Approx. 52.1 sq. metres (560.6 sq. feet)



Accommodation

GROUND FLOOR

Entrance Hallway

Cloakroom

Lounge Area: 43'0 x 13'3 (13.12m x 4.04m)

Kitchen/Diner: 20'0 x 12'8 (6.10m x 3.86m)

FIRST FLOOR

Landing

Bedroom 1: 13'5 x 12'4 (4.09m x 3.76m)

En-suite Shower Room

Bedroom 2: 11'3 x 10'2 (3.43m x 3.10m)

Bedroom 3: 14'4 x 9'2 (4.37m x 2.80m)

Bathroom: 8'9 x 7'6 (2.67m x 2.29m)

Converted Loft Space

OUTSIDE

Driveway to Front

Rear Garden



Main features

- Expansive living area enhanced by bi-fold doors to garden
- An ideal house for entertaining friends and family
- Converted loft space, perfect for a playroom
- All bedrooms are doubles with en-suite to the main bedroom
- Walking distance of local schools and Barnehurst rail station



Nearest Schools

Primary Schools: Normandy 0.0 mls, Northend 0.5 mls, Mayplace 0.8 mls. Secondary Schools & Further Education: Oakwood Schl 0.9 mls, St Catherine's Sch 1.1 mls, St Columba's Sch 1.2 mls, Beths Grammar Sch 1.7 mls, Townley Grammar Sch 2.5 mls.



Transport Information

Train Stations: Barnehurst 1 ml, Erith 1.7 mls, Bexleyheath 2.3 mls.



Address

Fairford Avenue, Bexleyheath, Kent, DA7



Directions

For directions to this property please contact us.



Call Barnehurst Branch 01322 335525 ■ wardsofkent.co.uk



- If buying to let, the energy rating will need to be improved to at least 'E' rating before you can let the property
- Appliances & services are untested, dimensions are approximate and floor plans are not to scale

- Legal advice should be taken to verify fixtures/fittings, planning, alterations and/or lease details