



OVER 60?

Secure this property
for up to **59% less!**

Price

£495,000

Freehold

3x  1x  1x 

**Bedonwell Road,
Bexleyheath, Kent, DA7**

Wards
Helping you move forwards



Main features

- Semi-detached house with a driveway
- Garage to the rear
- Close to Bexleyheath Station and good schools
- Massive garden with a big plot to the side
- Well presented family home which is ready to move into

Accommodation

GROUND FLOOR

Hallway
 Lounge: 14'6 x 10'6 (4.42m x 3.20m)
 Dining Room: 12'10 x 9'3 (3.91m x 2.82m)
 Kitchen: 9'6 x 6'8 (2.90m x 2.03m)

FIRST FLOOR

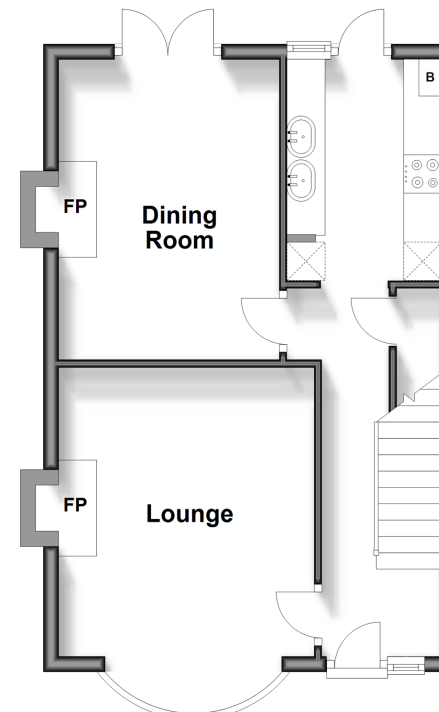
Landing
 Bedroom 1: 14'5 x 9'6 (4.40m x 2.90m)
 Bedroom 2: 12'10 x 8'7 (3.91m x 2.62m)
 Bedroom 3: 8'1 x 6'7 (2.47m x 2.01m)
 Bathroom

OUTSIDE

Garden to Front
 Garden to Rear
 Garage to Rear

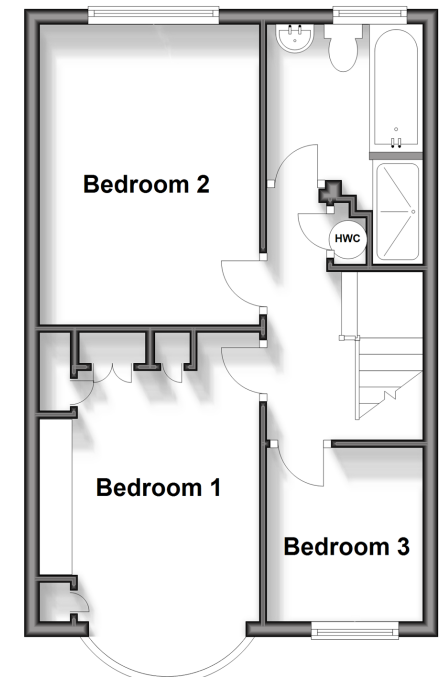
Ground Floor

Approx. 39.6 sq. metres (425.9 sq. feet)



First Floor

Approx. 39.5 sq. metres (425.6 sq. feet)



Call Barnehurst - 01322 335525 ■ wardsofkent.co.uk

■ Legal advice should be taken to verify fixtures/fittings, planning, alterations and/or lease details
 ■ Through a Homewise Home For Life Plan people aged 60+ can secure this property for up to 59% less, by purchasing a Lifetime Lease.

■ Appliances & services are untested, dimensions are approximate and floor plans are not to scale