



Price
£500,000

Freehold

4x  2x  3x 

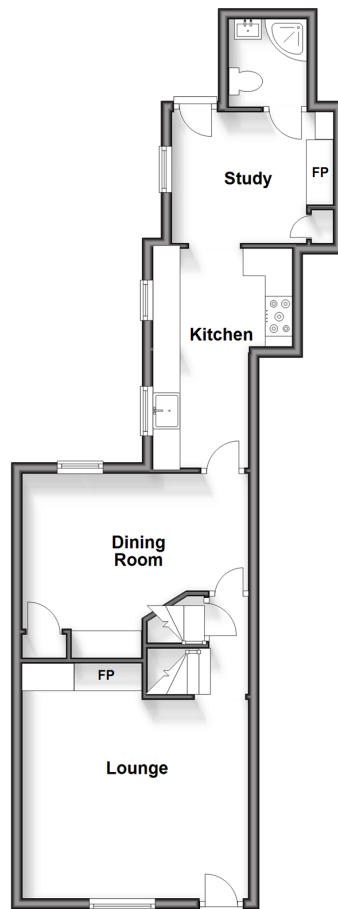
**Bexley Lane, Crayford,
Kent, DA1**

OVER 60?

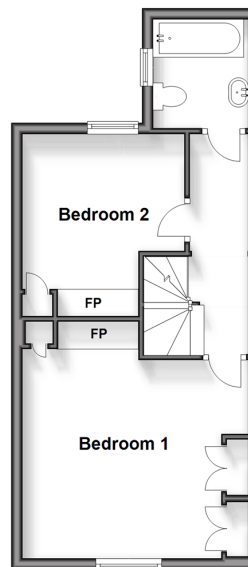
Secure this property
for up to **59% less!**

Wards
Helping you move forwards

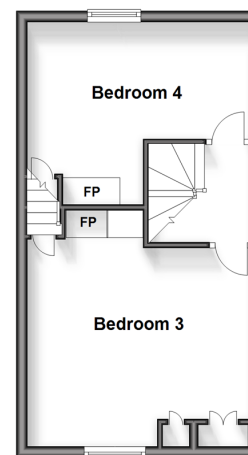
Ground Floor
Approx. 51.3 sq. metres (552.1 sq. feet)



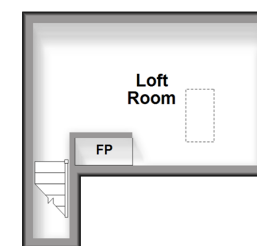
First Floor
Approx. 36.4 sq. metres (391.8 sq. feet)



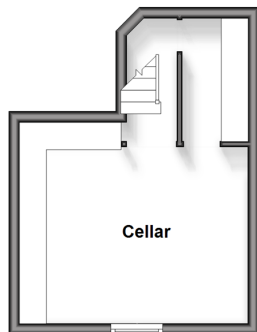
Second Floor
Approx. 32.7 sq. metres (351.6 sq. feet)



Third Floor
Approx. 11.9 sq. metres (127.9 sq. feet)



Basement
Approx. 19.9 sq. metres (214.6 sq. feet)



Accommodation

GROUND FLOOR

Lounge: 13'8 x 12'0 (4.17m x 3.66m)
Dining Room: 13'8 x 8'2 (4.17m x 2.49m)
Kitchen: 12'8 (3.86m) x 8'5 at widest point (2.57m)
narrowing to 5'8 at narrowest point (1.73m)
Study: 9'9 x 7'8 (2.97m x 2.34m)
Shower Room

BASEMENT

Cellar : 13'9 x 11'8 (4.19m x 3.56m)

FIRST FLOOR

Landing
Bedroom 1: 13'8 x 11'7 (4.17m x 3.53m)
Bedroom 2: 9'9 x 7'8 (2.97m x 2.34m)
Bathroom

SECOND FLOOR

Landing
Bedroom 3: 13'8 x 12'0 (4.17m x 3.66m)
Bedroom 4: 13'5 (4.09m) x 9'0 at widest point (2.75m)
narrowing to 7'2 at narrowest point (2.19m)

THIRD FLOOR

Loft Room

OUTSIDE

Rear Garden
Front Garden



Main features

- Grade II listed town house
- Good size rear garden
- Permit parking available
- Set within a conservation area with amenities nearby including the rail station and bus route
- Plenty of accommodation on offer including a usable cellar and a handy loft room



Nearest Schools

Primary Schools: St Paulinus 0.1 mls, St Joseph's 0.1 mls, Barnes Cray 0.3 mls, Mayplace Road Junior Sch 0.7 mls. Secondary Schools & Further Education: St Columba's Sch 0.8 mls, St Catherine's Sch 0.9 mls.



Transport Information

Train Stations: Crayford 0.3 mls, Barnehurst 1.0 mls, Slade Green 1.2 mls.



Address

Bexley Lane, Crayford, Kent, DA1



Directions

For directions to this property please contact us.



Wards
Helping you move forwards

Call Barnehurst Branch 01322 335525 ■ wardsofkent.co.uk



- Legal advice should be taken to verify fixtures/fittings, planning, alterations and/or lease details
- Appliances & services are untested, dimensions are approximate and floor plans are not to scale
- Through a Homewise Home For Life Plan people aged 60+ can secure this property for up to 59% less, by purchasing a Lifetime Lease.



14710762/20240210/JS1/GL