



Price
£245,000

Leasehold

2x  1x  1x 

**Waterfield Close,
Belvedere, Kent, DA17**

OVER 60?

You could get up to
59% off the price!*

Wards
Helping you move forwards



Main features

- 2nd floor apartment in fantastic condition throughout
- Great sized living area and separate kitchen
- Allocated parking space
- Brilliant choice for a first time buyer or a great buy to let
- Ideal location for commuters, close to station and local amenities

Accommodation

SECOND FLOOR

Hallway

Lounge/Diner: 19'4 x 12'10
(5.90m x 3.91m)

Kitchen: 10'5 x 6'6 (3.18m x 1.98m)

Bedroom 1: 14'11 x 8'8 (4.55m x 2.64m)

Bedroom 2: 9'9 x 6'11 (2.97m x 2.11m)

Bathroom

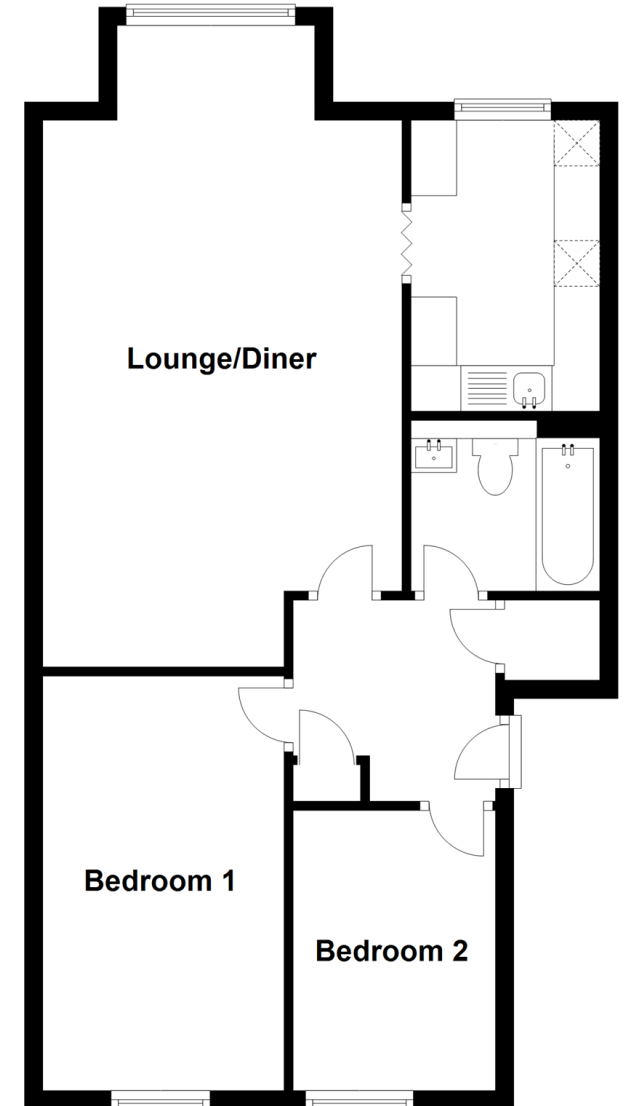
OUTSIDE

Communal Gardens

Allocated Parking Space

Second Floor

Approx. 62.1 sq. metres (669.0 sq. feet)



Call Barnehurst - 01322 335525 ■ wardsofkennt.co.uk

- Legal advice should be taken to verify fixtures/fittings, planning, alterations and/or lease details
- Appliances & services are untested, dimensions are approximate and floor plans are not to scale
- Our Homewise partnership offer a 'Home for Life' plan to buyers over 60, granting a lifetime lease for your protection and reducing the purchase price by up to 59%



14710256/20220226/JS1/BC