



**Price**  
**£430,000**

**Freehold**

4x  2x  2x 

**Highfield Road,  
Willesborough, Ashford,  
Kent, TN24**

**OVER 60?**

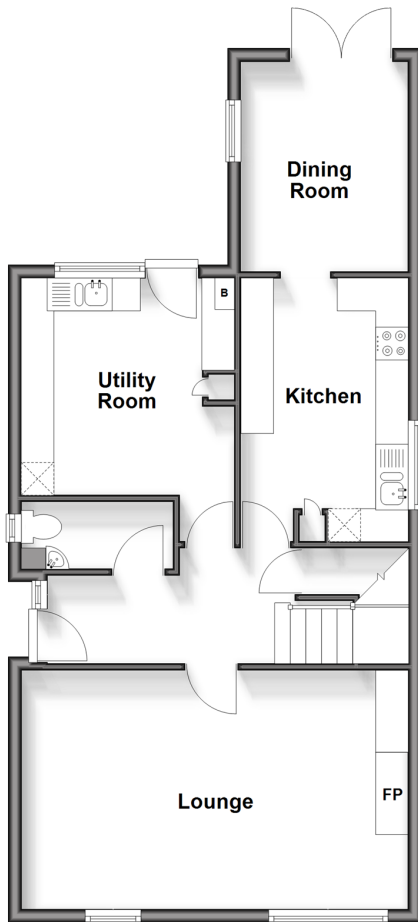
Secure this property  
for up to **59% less!**

*Wards*  
Helping you move forwards



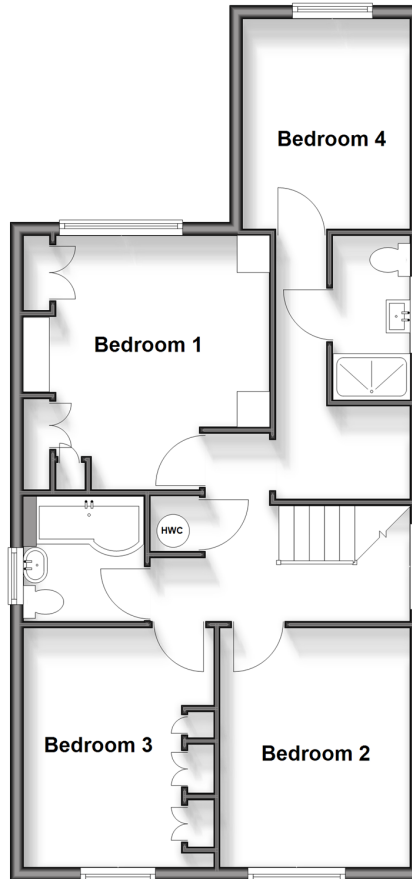
## Ground Floor

Approx. 64.8 sq. metres (698.0 sq. feet)



## First Floor

Approx. 65.5 sq. metres (704.6 sq. feet)



## Outbuilding

Approx. 15.9 sq. metres (170.8 sq. feet)



## Accommodation

### GROUND FLOOR

Entrance Hall

Cloakroom

Lounge: 19'4 x 12'4 (5.90m x 3.76m)

Utility Room: 11'0 x 10'2 (3.36m x 3.10m)

Kitchen: 12'9 x 9'2 (3.89m x 2.80m)

Dining Room: 11'0 x 8'3 (3.36m x 2.52m)

### FIRST FLOOR

Landing

Bedroom 1: 12'9 x 12'5 (3.89m x 3.79m)

Shower Room: 8'5 x 4'2 (2.57m x 1.27m)

Bedroom 2: 12'5 x 9'7 (3.79m x 2.92m)

Bedroom 3: 12'3 x 9'8 (3.74m x 2.95m)

Bathroom: 6'8 x 6'3 (2.03m x 1.91m)

Bedroom 4: 11'3 x 9'1 (3.43m x 2.77m)

### OUTBUILDING

Garage

### OUTSIDE

Front & Rear Gardens

Driveway



## Main features

- Garage with driveway for up to 3 cars
- Electric charging point
- Large sun trap wrap-around garden
- Popular Highfield development, perfect for families
- Walking distance to schools, transport links and easy access to M20
- All bedrooms are double in size
- Cloakroom



### Nearest Schools

Primary Schools: Willesborough Junior School 0.0 miles, East Stour Primary 1.2 miles, Furley Park Primary 2.0 miles  
Secondary Schools: The Norton Knatchbull School 1.0 miles, The North School 1.4 miles



### Transport Information

Train Stations: Ashford International 2.3 miles, Wye 5.7 miles, Charing 6.9 miles



### Address

Highfield Road, Willesborough, Ashford, Kent, TN24



### Directions

For directions to this property please contact us.





**Wards**  
Helping you move forwards

Call Ashford Branch 01233 639531 ■ [wardsofkent.co.uk](https://wardsofkent.co.uk)



- Legal advice should be taken to verify fixtures/fittings, planning, alterations and/or lease details
- Appliances & services are untested, dimensions are approximate and floor plans are not to scale
- Through a Homewise Home For Life Plan people aged 60+ can secure this property for up to 59% less, by purchasing a Lifetime Lease.



12243153/20250410/MB/RB