



Price
£340,000

Freehold

3x  1x  1x 

**Cosway Cottage,
Bonnington Road,
Bilsington, Ashford,
Kent, TN25**

Wards
Helping you move forwards



Main features

- Desirable village location
- Large south facing garden with workshop
- Potential to extend (STPC)
- Views of open countryside
- Solar panels providing an income

Accommodation

GROUND FLOOR

Entrance Hall

Lounge/Dining Room: 24'8 x 12'4 (7.52m x 3.76m)

Kitchen: 12'2 at widest point x 8'1 (3.71m x 2.47m)

Cloakroom

Laundry Room

Shower Room

FIRST FLOOR

Bedroom 1 : 13'1 x 7'1 (3.99m x 2.16m)

Bedroom 3 : 9'8 x 6'7 (2.95m x 2.01m)

Bedroom 2 : 11'6 x 8'9 (3.51m x 2.67m)

Bathroom

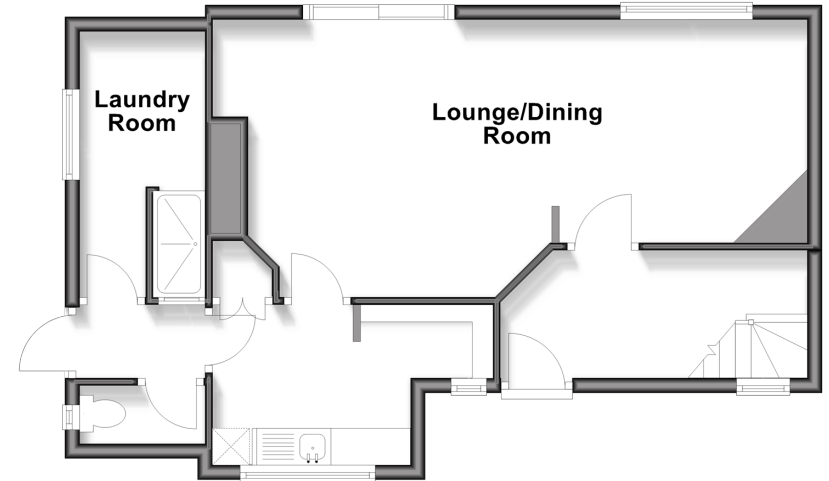
OUTSIDE

Front and Rear Gardens

Workshop

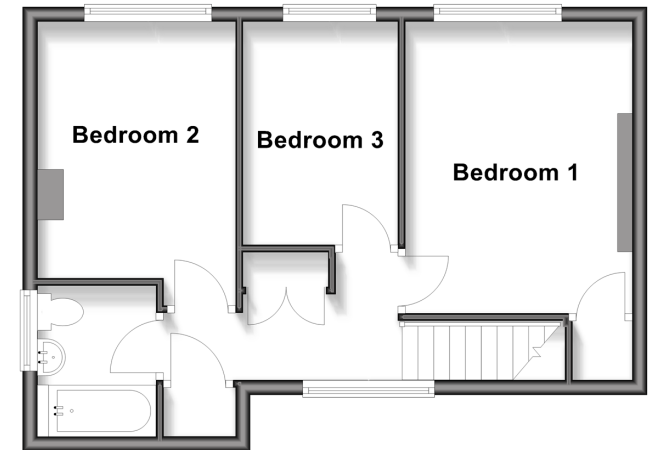
Ground Floor

Approx. 52.4 sq. metres (563.8 sq. feet)



First Floor

Approx. 41.1 sq. metres (442.8 sq. feet)



Call Ashford - 01233 639531 ■ wardsof Kent.co.uk

- Legal advice should be taken to verify fixtures/fittings, planning, alterations and/or lease details
- Appliances & services are untested, dimensions are approximate and floor plans are not to scale



12242640/20251025//JRB