



Price
£650,000

Freehold

4x  2x  2x 

**Park Farm Close,
Shadoxhurst, Ashford,
Kent, TN26**

OVER 60?

Secure this property
for up to **59% less!**

Wards
Helping you move forwards



Main features

- Open views to the rear
- Guest Cloakroom
- Two separate living areas
- En-suite to main bedroom
- Study
- Garage and driveway parking
- Private cul-de-sac location

Accommodation

GROUND FLOOR

Entrance Hall

Lounge: 21'8 x 13'7 (6.61m x 4.14m)

Back Lounge: 19'9 x 13'2 (6.02m x 4.02m)

Dining Room : 14'2 x 8'10 (4.32m x 2.69m)

Kitchen: 14'2 x 10'4 (4.32m x 3.15m)

FIRST FLOOR

Landing

Study: 9'8 x 5'9 (2.95m x 1.75m)

Bedroom 2: 13'4 x 11'1 (4.07m x 3.38m)

Bedroom 3: 13'9 x 9'5 (4.19m x 2.87m)

Bathroom

Bedroom 1: 11'7 x 11'2 (3.53m x 3.41m)

En-Suite Shower

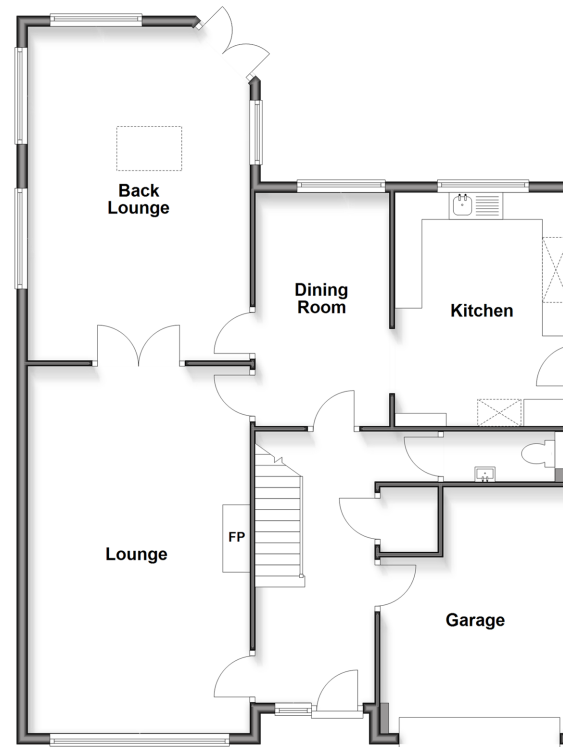
Bedroom 4: 16'4 x 10'4 (4.98m x 3.15m)

OUTSIDE

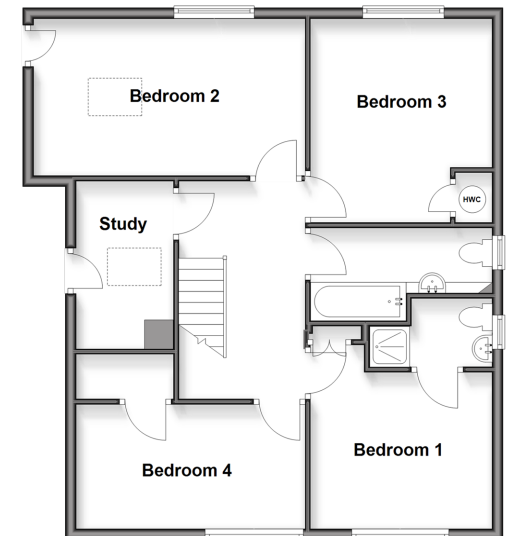
Front and Rear Gardens

Garage

Ground Floor
Approx. 111.8 sq. metres (1203.5 sq. feet)



First Floor
Approx. 75.7 sq. metres (814.9 sq. feet)



Call Ashford - 01233 639531 ■ wardsof Kent.co.uk

■ Legal advice should be taken to verify fixtures/fittings, planning, alterations and/or lease details
 ■ Through a Homewise Home For Life Plan people aged 60+ can secure this property for up to 59% less, by purchasing a Lifetime Lease.

■ Appliances & services are untested, dimensions are approximate and floor plans are not to scale



12243089/20250809//JRB