



Price
£625,000

Freehold

6x  3x  1x 

**Hythe Road,
Willesborough, Ashford,
Kent, TN24**

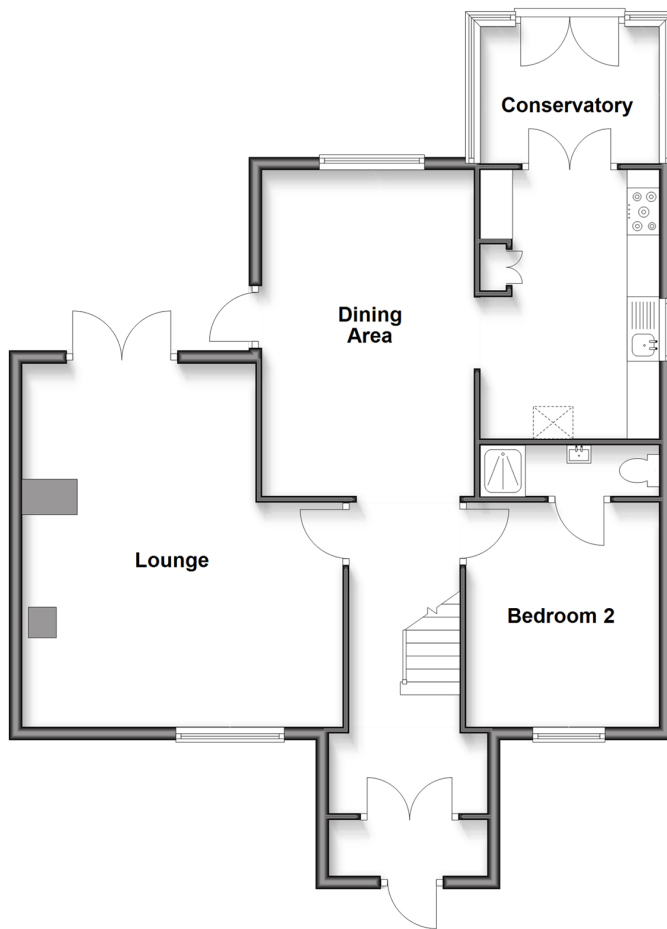
OVER 60?

Secure this property
for up to **59% less!**

Wards
Helping you move forwards

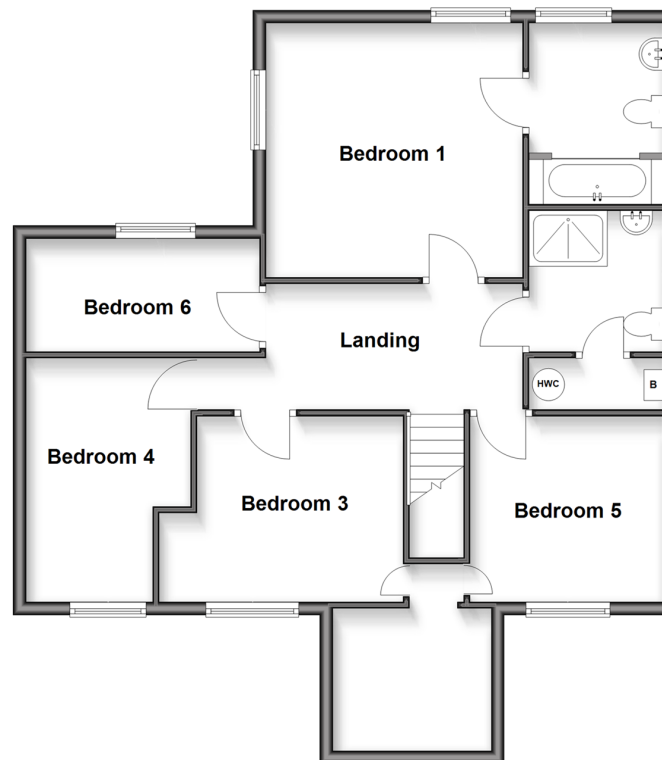
Ground Floor

Approx. 86.2 sq. metres (927.5 sq. feet)



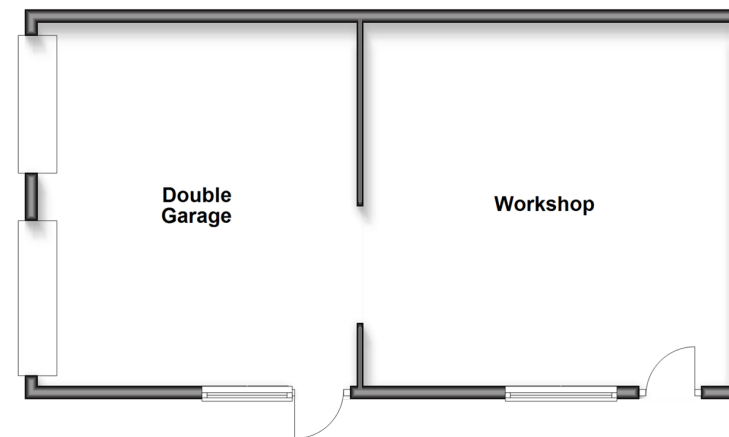
First Floor

Approx. 83.2 sq. metres (895.9 sq. feet)



Outbuilding

Approx. 60.5 sq. metres (651.2 sq. feet)



Accommodation

GROUND FLOOR

Porch
Hallway
Lounge: 19'0 x 16'4 (5.80m x 4.98m)
Kitchen/Dining Area: 16'7 x 11'6 (5.06m x 3.51m) plus 13'6 x 9'3 (4.12m x 2.82m)
Conservatory: 9'7 x 7'11 (2.92m x 2.41m)
Bedroom 2: 11'7 x 10'0 (3.53m x 3.05m)
En-Suite Shower Room: 10'3 x 2'8 (3.13m x 0.81m)

FIRST FLOOR

Landing
Bedroom 1: 13'4 x 12'6 (4.07m x 3.81m)
En-Suite Bathroom: 9'6 x 6'9 (2.90m x 2.06m)
Shower Room: 7'2 x 7'0 (2.19m x 2.14m)
Bedroom 5: 10'3 x 9'5 (3.13m x 2.87m)
Bedroom 3: 12'5 x 9'4 (3.79m x 2.85m)
Bedroom 4: 12'4 x 9'1 (3.76m x 2.77m)
Bedroom 6: 11'8 x 6'4 (3.56m x 1.93m)

OUTBUILDING

Double Garage: 18'7 x 17'1 (5.67m x 5.21m)
Workshop: 19'0 x 18'5 (5.80m x 5.62m)

OUTSIDE

Driveway
Front & Rear Gardens



Main features

- The property is being sold with no onward chain
- Neutral design throughout this character house
- Double garage and workshop with potential convert (subject to planning consents)
- Large driveway to the front and a great sized rear garden
- Within walking distance to local schools, town centre and Ashford International Station



Nearest Schools

Primary Schools: Willesborough Junior School 0.2 miles, East Stour Primary 1.0 miles, Victoria Road Primary 1.4 miles. Secondary Schools: The Norton Knatchbull School 0.6 miles, The North School 0.7 miles, Ashford School 1.1 miles.



Transport Information

Train Stations: Ashford International 1.2 miles, Wye 3.2 miles, Ham Street 5.4 miles



Address

Hythe Road, Willesborough, Ashford, Kent, TN24



Directions

For directions to this property please contact us.



Call Ashford Branch 01233 639531 ■ wardsofkent.co.uk



- Legal advice should be taken to verify fixtures/fittings, planning, alterations and/or lease details
- Appliances & services are untested, dimensions are approximate and floor plans are not to scale
- Through a Homewise Home For Life Plan people aged 60+ can secure this property for up to 59% less, by purchasing a Lifetime Lease.



12242539/20250621/MB/RB