



Price
£315,000

Freehold

3x  2x  1x 

**Kestrel Close, Ashford,
Kent, TN23**

OVER 60?

Secure this property
for up to **59% less!**

Wards
Helping you move forwards



Main features

- Chain free!
- Garage with driveway parking
- Popular Park Farm location
- Downstairs cloakroom
- Close by to schools, amenities and transport links

Accommodation

GROUND FLOOR

Entrance Hall
Cloakroom
Lounge: 17'6 x 16'2 (5.34m x 4.93m)
Kitchen: 9'7 x 9'2 (2.92m x 2.80m)

FIRST FLOOR

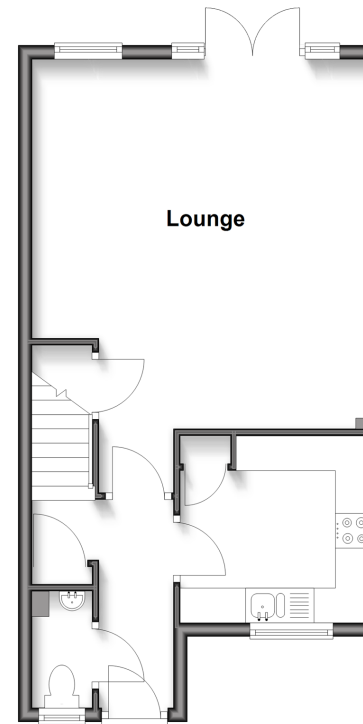
Landing
Bathroom: 6'8 x 6'6 (2.03m x 1.98m)
Bedroom 1: 11'3 x 9'9 (3.43m x 2.97m)
En-Suite Shower Room: 7'1 x 5'2 (2.16m x 1.58m)
Bedroom 2: 9'9 x 9'6 (2.97m x 2.90m)
Bedroom 3: 8'2 x 6'6 (2.49m x 1.98m)

OUTSIDE

Garage & Driveway
Front & Rear Gardens

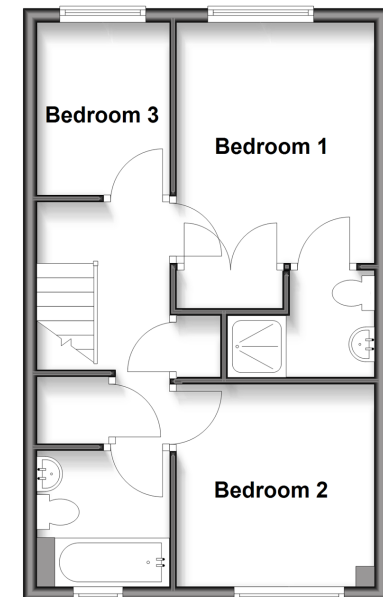
Ground Floor

Approx. 42.6 sq. metres (458.6 sq. feet)



First Floor

Approx. 40.1 sq. metres (431.8 sq. feet)



Call Ashford - 01233 639531 ■ wardsofkent.co.uk

■ Legal advice should be taken to verify fixtures/fittings, planning, alterations and/or lease details
■ Through a Homewise Home For Life Plan people aged 60+ can secure this property for up to 59% less, by purchasing a Lifetime Lease.

■ Appliances & services are untested, dimensions are approximate and floor plans are not to scale



12231130/20250524/MB/RB