



Guide Price
£340,000

Freehold

3x  2x  1x 

**Saddleback Close,
Ashford, Kent, TN25**

OVER 60?

Secure this property
for up to **59% less!**

Wards
Helping you move forwards



Main features

- Recently built Persimmon home with
- remainder of NHBC guarantee
- Guest cloakroom
- Gas central heating and double glazing
- Large lounge/dining room with patio doors overlooking garden
- Carport and driveway parking
- No forward chain

Accommodation

GROUND FLOOR

Hallway
Cloakroom
Kitchen: 10'5 x 6'9 (3.18m x 2.06m)
Lounge: 17'4 x 16'6 (5.29m x 5.03m)

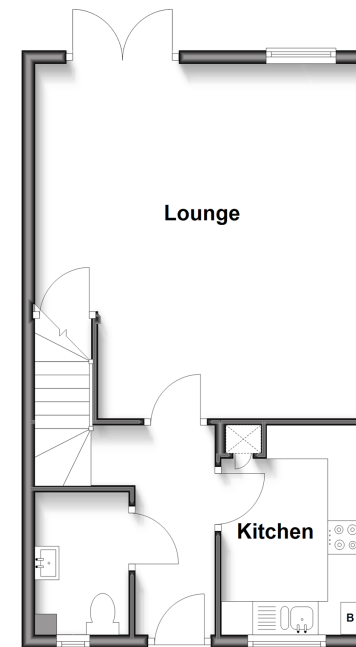
FIRST FLOOR

Landing
Bedroom 1: 11'1 x 9'8 (3.38m x 2.95m)
En-Suite Shower Room
Bedroom 2: 10'9 x 9'1 (3.28m x 2.77m)
Bedroom 3: 10'9 x 7'1 (3.28m x 2.16m)
Bathroom

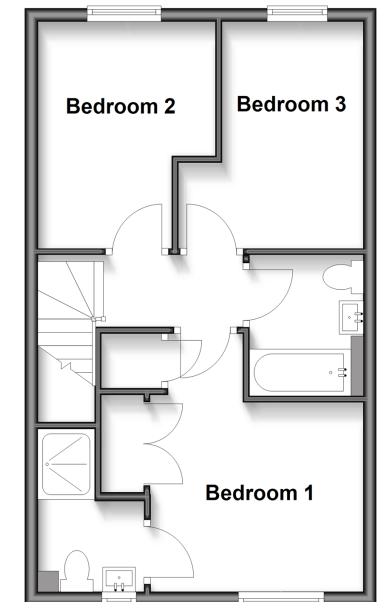
OUTSIDE

Front & Rear Gardens
Carport

Ground Floor
Approx. 42.6 sq. metres (458.2 sq. feet)



First Floor
Approx. 42.6 sq. metres (458.2 sq. feet)



Call Ashford - 01233 639531 ■ wardsofkent.co.uk

■ Legal advice should be taken to verify fixtures/fittings, planning, alterations and/or lease details
■ Through a Homewise Home For Life Plan people aged 60+ can secure this property for up to 50% less, by purchasing a Lifetime Lease.

■ Appliances & services are untested, dimensions are approximate and floor plans are not to scale