



Price
£125,000

Leasehold

1x  1x  1x 

**Hever Gardens, Ashford,
Kent, TN23**

OVER 60?

Secure this property
for up to **59% less!**

Wards
Helping you move forwards



Main features

- **Allocated parking**
- **Chain-free**
- **Bedroom is double in size**
- **Gas central heating**
- **Communal gardens**
- **Access to bike store and bin shed**
- **Balcony perfect for relaxing on those sunny days**
- **Close by to amenities, schools and transport links**

Accommodation

FIRST FLOOR

Entrance Hall

Kitchen/Lounge/Diner: 10'4 x 8'0 (3.15m x 2.44m) plus 12'5 x 17'3 (3.79m x 5.26m)

Bathroom: 7'4 x 6'2 (2.24m x 1.88m)

Bedroom : 13'4 x 9'7 (4.07m x 2.92m)

Balcony

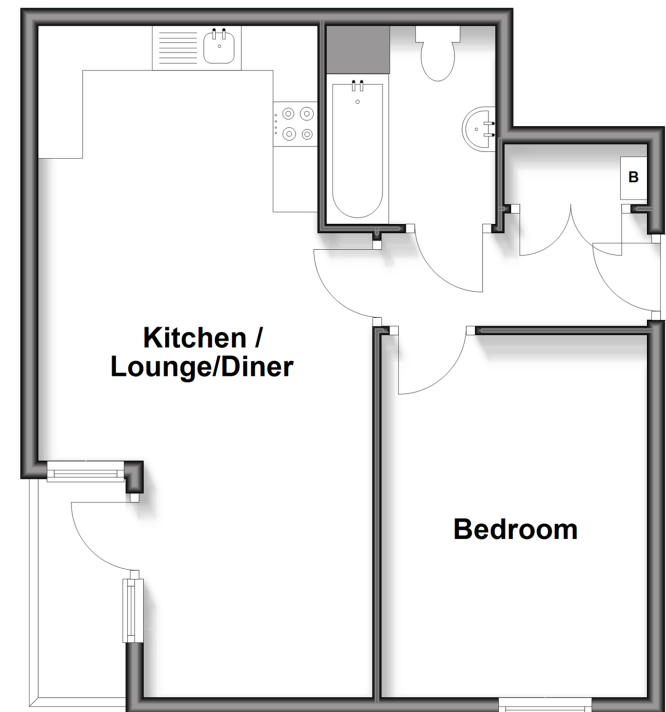
OUTSIDE

Communal Gardens

Allocated Parking

First Floor

Approx. 46.1 sq. metres (496.2 sq. feet)



Call Ashford - 01233 639531 ■ wardsofkent.co.uk

■ Legal advice should be taken to verify fixtures/fittings, planning, alterations and/or lease details
 ■ Through a Homewise Home For Life Plan people aged 60+ can secure this property for up to 59% less, by purchasing a Lifetime Lease.

■ Appliances & services are untested, dimensions are approximate and floor plans are not to scale



12243082/20250224/JW/RB