



**Price**

**£475,000**

**Freehold**

4x  2x  2x 

**Alec Pemble Close,  
Kennington, Ashford,  
Kent, TN24**

**OVER 60?**

Secure this property  
for up to **59% less!**

*Wards*  
Helping you move forwards





## Main features

- Chain-free
- Garage with driveway parking
- Popular Kennington Area
- Within walking distance to schools, doctors, amenities and transport links
- Neutral design throughout, awaiting a personal touch

## Accommodation

### GROUND FLOOR

Hallway  
Cloakroom  
Lounge: 15'3 x 14'8 (4.65m x 4.47m)  
Kitchen: 16'5 x 8'8 (5.01m x 2.64m)  
Conservatory: 18'6 x 10'1 (5.64m x 3.08m)  
Dining Room: 11'1 x 8'8 (3.38m x 2.64m)

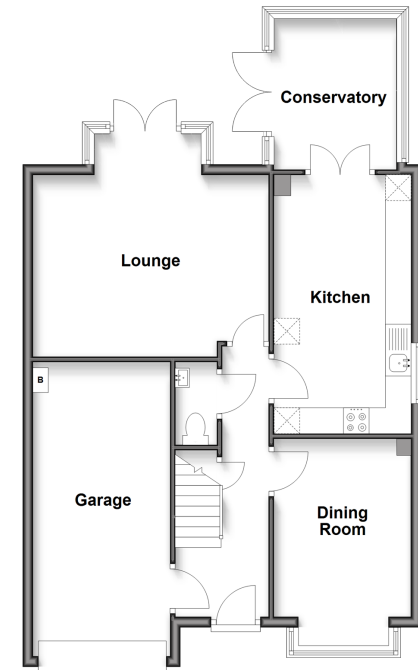
### FIRST FLOOR

Landing  
Bedroom 1: 12'0 x 11'9 (3.66m x 3.58m)  
En-Suite Shower Room: 8'5 x 5'7 (2.57m x 1.70m)  
Bedroom 2: 12'8 x 9'5 (3.86m x 2.87m)  
Bedroom 3: 10'7 x 9'4 (3.23m x 2.85m)  
Bedroom 4: 10'0 x 9'4 (3.05m x 2.85m)  
Bathroom: 6'4 x 5'5 (1.93m x 1.65m)

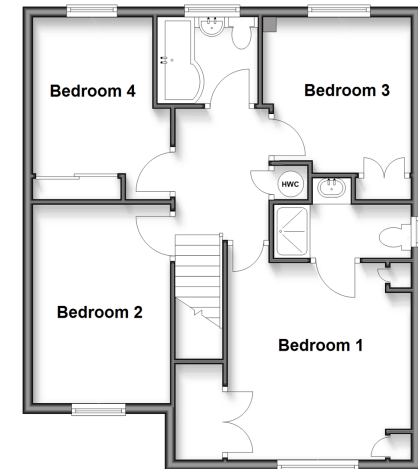
### OUTSIDE

Front & Rear Gardens  
Integral Garage: 18'6 x 8'6 (5.64m x 2.59m)  
Driveway

**Ground Floor**  
Approx. 74.3 sq. metres (800.2 sq. feet)



**First Floor**  
Approx. 60.0 sq. metres (645.4 sq. feet)



**Call Ashford - 01233 639531 ■ [wardsofkennt.co.uk](http://wardsofkennt.co.uk)**

- Legal advice should be taken to verify fixtures/fittings, planning, alterations and/or lease details
- Appliances & services are untested, dimensions are approximate and floor plans are not to scale
- Through a Homewise Home For Life Plan people aged 60+ can secure this property for up to 59% less, by purchasing a Lifetime Lease.



12243065/20250222/JW/RB