



OVER 60?

Secure this property
for up to **59% less!**

Price

£475,000

Freehold

4x  2x  1x 

**Goldfinch Drive,
Ashford, Kent, TN25**

Wards
Helping you move forwards



Main features

- Double car port to the rear
- Modern design throughout
- Sun-trap rear garden
- Picturesque views overlooking the nature reserve
- Close by to a reputable school and has easy access to the M20

Accommodation

GROUND FLOOR

Entrance Hall
Cloakroom
Kitchen/Diner: 27'4 x 11'7 (8.34m x 3.53m)
Utility Room: 6'5 x 4'8 (1.96m x 1.42m)
Lounge: 19'6 x 11'2 (5.95m x 3.41m)

FIRST FLOOR

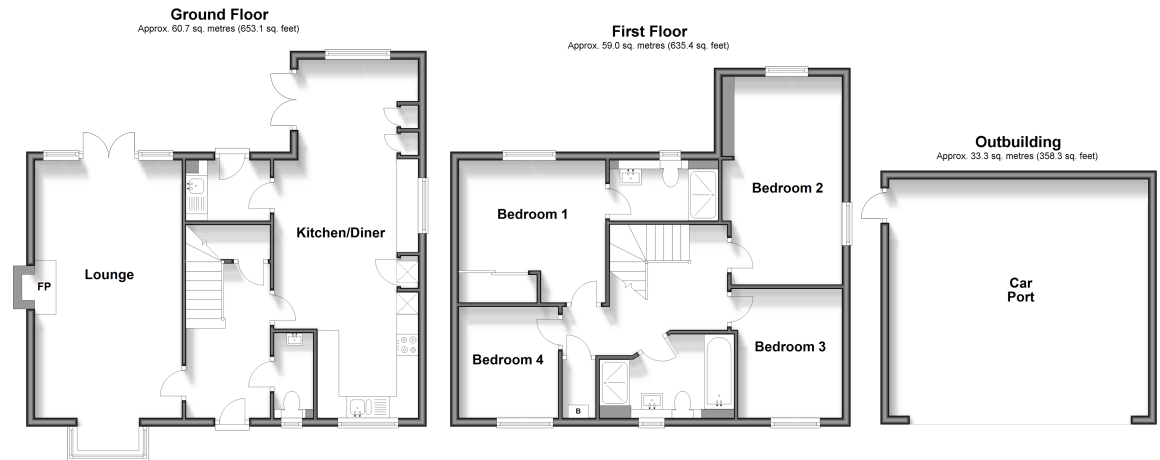
Landing
Bedroom 1: 11'4 x 9'0 (3.46m x 2.75m)
En-Suite Shower Room
Bedroom 2: 13'5 x 9'6 (4.09m x 2.90m)
Bedroom 3: 10'3 x 8'0 (3.13m x 2.44m)
Bedroom 4: 8'7 x 7'7 (2.62m x 2.31m)
Bathroom: 10'4 x 6'0 (3.15m x 1.83m)

OUTBUILDING

Car Port

OUTSIDE

Front & Rear Gardens
Driveway



Call Ashford - 01233 639531 ■ wardsofkent.co.uk

■ Legal advice should be taken to verify fixtures/fittings, planning, alterations and/or lease details
■ Through a Homewise Home For Life Plan people aged 60+ can secure this property for up to 59% less, by purchasing a Lifetime Lease.

■ Appliances & services are untested, dimensions are approximate and floor plans are not to scale