



**Price**  
**£375,000**

**Freehold**

3x  1x  1x 

**Hoppers Way, Ashford,  
Kent, TN23**

**OVER 60?**

Secure this property  
for up to **59% less!**

*Wards*  
Helping you move forwards





## Main features

- Garage with driveway parking
- Quiet cul-de-sac location
- Downstairs cloakroom
- Open-planned kitchen/diner with separate utility room
- Close by to schools, amenities and transport links
- Great size garden

## Accommodation

### GROUND FLOOR

Hallway

Lounge: 19'6 x 10'2 (5.95m x 3.10m)

Cloakroom

Kitchen/Diner: 19'4 x 8'8 (5.90m x 2.64m)

Utility Room: 6'7 x 5'3 (2.01m x 1.60m)

### FIRST FLOOR

Landing

Bedroom 1: 12'8 x 8'5 (3.86m x 2.57m)

Bedroom 2: 10'5 x 10'0 (3.18m x 3.05m)

Bedroom 3: 10'3 x 6'0 (3.13m x 1.83m)

Shower Room

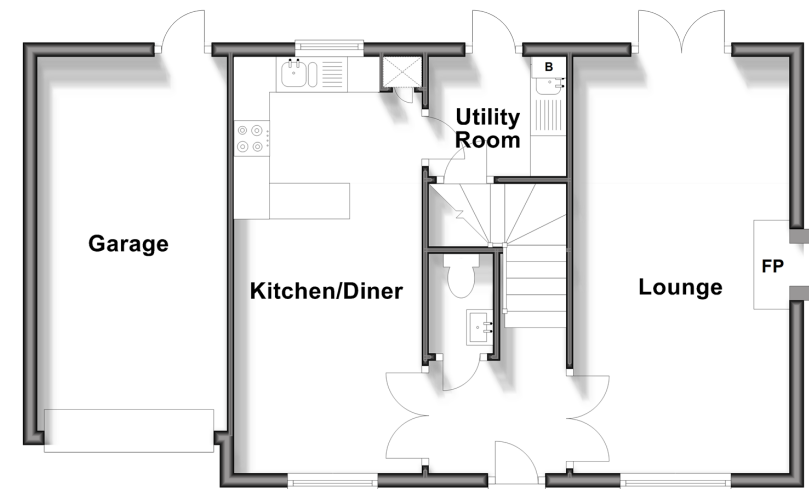
### OUTSIDE

Front & Rear Gardens

Garage & Driveway

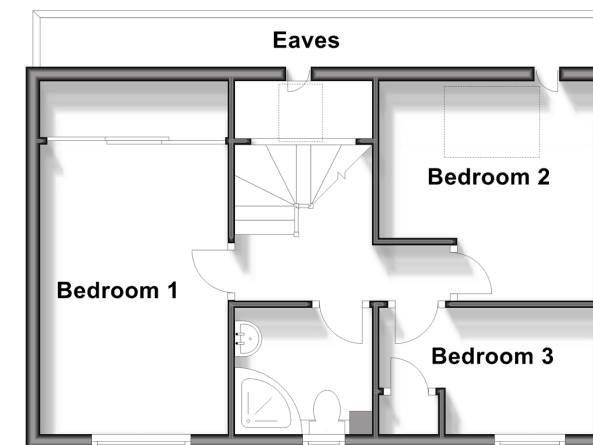
### Ground Floor

Approx. 59.9 sq. metres (645.2 sq. feet)



### First Floor

Approx. 38.6 sq. metres (415.0 sq. feet)



**Call Ashford - 01233 639531 ■ [wardsofkent.co.uk](http://wardsofkent.co.uk)**

Legal advice should be taken to verify fixtures/fittings, planning, alterations and/or lease details

- Appliances & services are untested, dimensions are approximate and floor plans are not to scale
- Through a Homewise Home For Life Plan people aged 60+ can secure this property for up to 59% less, by purchasing a Lifetime Lease.



12242918/20241207/KM/RB