



OVER 60?

Secure this property
for up to **59% less!**

Price

£300,000

Freehold

3x  1x  2x 

**William Road, Ashford,
Kent, TN23**

Wards

Helping you move forwards



Main features

- Lounge/dining area with feature gas fire and patio doors to garden
- Mature private garden backing on to allotments
- Guest cloakroom
- Refitted shower room
- Gas central heating
- Potential for off road parking at front subject to planning permission
- No forward chain

Accommodation

GROUND FLOOR

Entrance Porch
 Entrance Hall
 Lounge: 13'5 x 12'1 into bay (4.09m x 3.69m)
 Dining Area: 12'7 x 10'4 (3.84m x 3.15m)
 Kitchen: 13'2 x 6'6 (4.02m x 1.98m)
 Cloakroom
 Rear Lobby

FIRST FLOOR

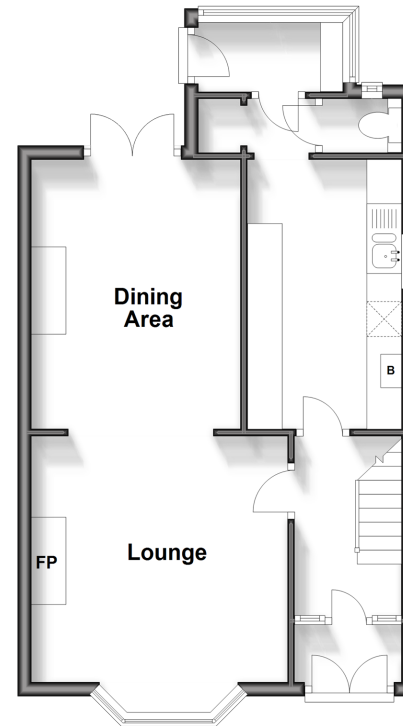
Landing
 Bedroom 1: 12'4 x 11'7 (3.76m x 3.53m)
 Bedroom 2: 11'8 x 10'2 (3.56m x 3.10m)
 Bedroom 3: 8'6 x 7'1 (2.59m x 2.16m)
 Shower Room

OUTSIDE

Front & Rear Gardens

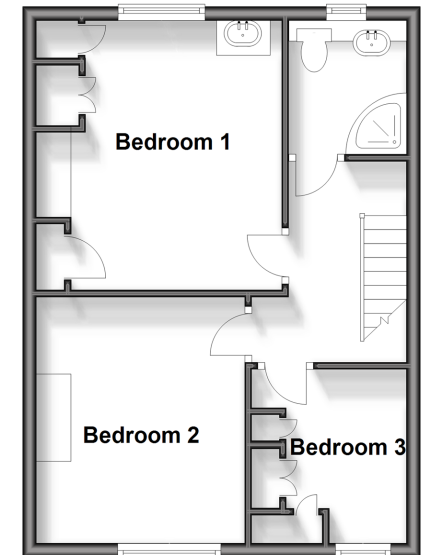
Ground Floor

Approx. 45.1 sq. metres (485.4 sq. feet)



First Floor

Approx. 40.0 sq. metres (430.6 sq. feet)



Call Ashford - 01233 639531 ■ wardsof Kent.co.uk

■ Legal advice should be taken to verify fixtures/fittings, planning, alterations and/or lease details
 ■ Through a Homewise Home For Life Plan people aged 60+ can secure this property for up to 59% less, by purchasing a Lifetime Lease.

■ Appliances & services are untested, dimensions are approximate and floor plans are not to scale



12242868/20241206/JW/JRB