



Price
£265,000

Freehold

2x  1x  1x 

**High Street, Charing,
Kent, TN27**

OVER 60?

Secure this property
for up to **59% less!**

Wards
Helping you move forwards



Main features

- Village cottage in a popular Charing location
- Close to amenities
- 2 allocated parking spaces to the rear
- Chain free
- Both bedrooms are double in size

Accommodation

GROUND FLOOR

Lounge: 12'1 x 12'0 (3.69m x 3.66m)

Kitchen: 14'0 x 12'1 (4.27m x 3.69m)

FIRST FLOOR

Landing

Bedroom 1: 12'0 x 11'0 (3.66m x 3.36m)

Bedroom 2: 11'0 x 7'0 (3.36m x 2.14m)

Bathroom: 7'6 x 5'0 (2.29m x 1.53m)

OUTSIDE

Rear Garden

2 x Allocated Parking Spaces

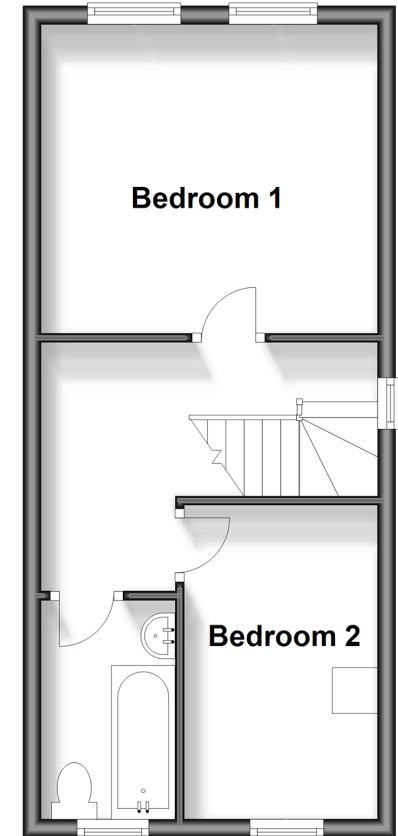
Ground Floor

Approx. 31.7 sq. metres (341.2 sq. feet)



First Floor

Approx. 32.1 sq. metres (345.9 sq. feet)



Call Ashford - 01233 639531 ■ wardsof Kent.co.uk

- Legal advice should be taken to verify fixtures/fittings, planning, alterations and/or lease details
- Appliances & services are untested, dimensions are approximate and floor plans are not to scale
- Through a Homewise Home For Life Plan people aged 60+ can secure this property for up to 59% less, by purchasing a Lifetime Lease.



12242934/20241119/JJ/RB