



Price
£350,000

Freehold

3x  2x  2x 

**Butterside Road,
Kingsnorth, Ashford,
Kent, TN23**

OVER 60?

Secure this property
for up to **59% less!**

Wards
Helping you move forwards



Main features

- Garage with driveway parking
- Popular Park Farm location
- Part of the garage has been converted to an office
- Close by to schools, amenities and transport links
- Neutral design throughout with conservatory

Accommodation

GROUND FLOOR

Entrance Hall
 Lounge: 15'5 x 11'9 (4.70m x 3.58m)
 Conservatory: 11'2 x 11'1 (3.41m x 3.38m)
 Kitchen: 10'3 x 9'0 (3.13m x 2.75m)
 Dining Room: 11'0 x 9'3 (3.36m x 2.82m)

FIRST FLOOR

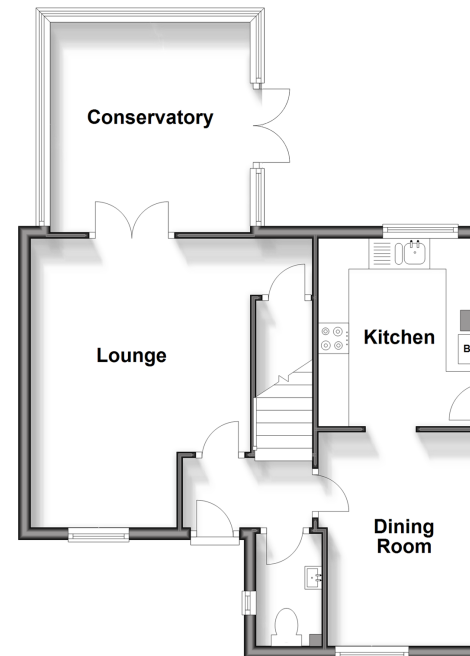
Landing
 Bedroom 1: 11'5 x 9'4 (3.48m x 2.85m)
 En-Suite Shower Room: 6'3 x 5'2 (1.91m x 1.58m)
 Bedroom 2: 12'1 x 8'8 (3.69m x 2.64m)
 Bedroom 3: 9'4 x 6'5 (2.85m x 1.96m)
 Bathroom: 6'3 x 6'2 (1.91m x 1.88m)

OUTSIDE

Front & Rear Gardens
 Garage (Used as office): 11'0 x 7'6 (3.36m x 2.29m)
 Garage: 8'2 x 7'8 (2.49m x 2.34m)
 Driveway

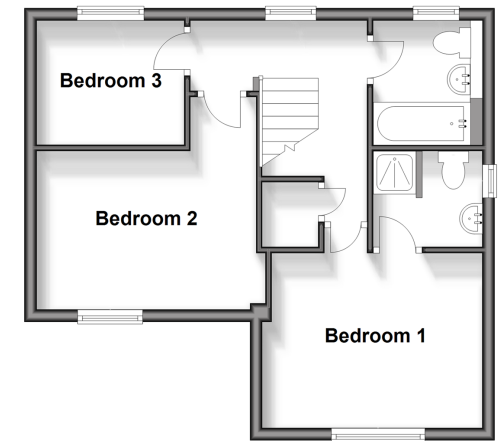
Ground Floor

Approx. 53.3 sq. metres (573.5 sq. feet)



First Floor

Approx. 41.7 sq. metres (448.6 sq. feet)



Call Ashford - 01233 639531 ■ wardsof Kent.co.uk

- Legal advice should be taken to verify fixtures/fittings, planning, alterations and/or lease details
- Through a Homewise Home For Life Plan people aged 60+ can secure this property for up to 59% less, by purchasing a Lifetime Lease.

- Appliances & services are untested, dimensions are approximate and floor plans are not to scale



12242546/20241112/MB/RB