



OVER 60?

Secure this property
for up to **59% less!**

Price

£220,000

Freehold

3x  1x  2x 

**Osborne Road,
Willesborough, Ashford,
Kent, TN24**

Wards
Helping you move forwards



Main features

- In need of modernisation with lots of potential
- On a bus route and close to local amenities
- No onward chain
- Competitive schools within walking distance
- Kitchen/dining area to rear

Accommodation

GROUND FLOOR

Entrance Porch
Hallway
Lounge: 13'6 x 12'7 (4.12m x 3.84m)
Dining Area: 10'6 x 8'9 (3.20m x 2.67m)
Kitchen: 9'5 x 7'8 (2.87m x 2.34m)

FIRST FLOOR

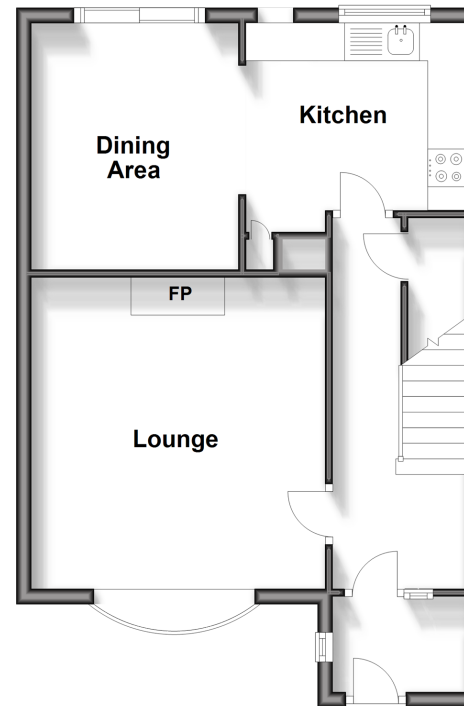
Landing
Bedroom 1: 12'4 x 10'8 (3.76m x 3.25m)
Bedroom 2: 10'3 x 9'1 (3.13m x 2.77m)
Bedroom 3: 9'1 x 7'9 (2.77m x 2.36m)
Bathroom: 8'3 x 5'4 (2.52m x 1.63m)

OUTSIDE

Front & Rear Gardens

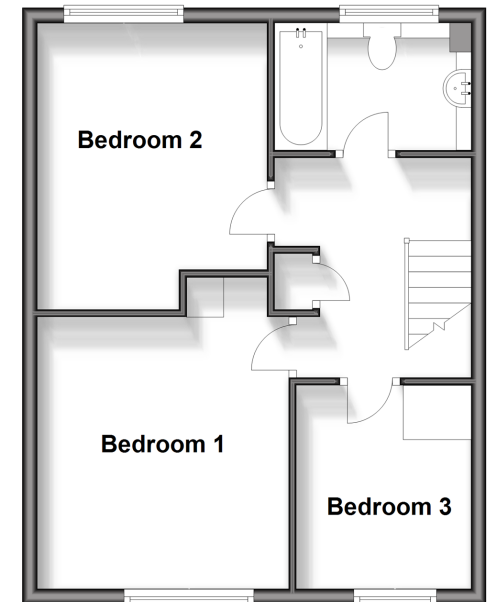
Ground Floor

Approx. 46.0 sq. metres (495.2 sq. feet)



First Floor

Approx. 43.3 sq. metres (466.1 sq. feet)



Call Ashford - 01233 639531 ■ wardsof Kent.co.uk

- Legal advice should be taken to verify fixtures/fittings, planning, alterations and/or lease details
- Through a Homewise Home For Life Plan people aged 60+ can secure this property for up to 59% less, by purchasing a Lifetime Lease.

- Appliances & services are untested, dimensions are approximate and floor plans are not to scale



12242668/20240808/MB/JJ