



Price
£325,000

Freehold

4x  2x  2x 

**Hillbrow Road, Ashford,
Kent, TN23**

OVER 60?

Secure this property
for up to **59% less!**

Wards
Helping you move forwards



Main features

- **Garage with driveway parking for 3 cars**
- **Large rear garden**
- **Quiet location**
- **Close to Ashford International Station**
- **Close to town centre and transport links**

Accommodation

GROUND FLOOR

Hallway
Bathroom
Family Room: 10'8 x 10'1 (3.25m x 3.08m)
Lounge: 15'0 x 12'1 (4.58m x 3.69m)
Kitchen: 12'1 x 6'3 (3.69m x 1.91m)

FIRST FLOOR

Landing
Bedroom 1: 11'3 x 9'1 (3.43m x 2.77m)
Bedroom 2: 11'8 x 8'6 (3.56m x 2.59m)
Bedroom 3: 10'7 x 9'5 (3.23m x 2.87m)
Bedroom 4: 7'7 x 7'6 (2.31m x 2.29m)
Shower Room: 9'2 x 7'6 (2.80m x 2.29m)

OUTBUILDING

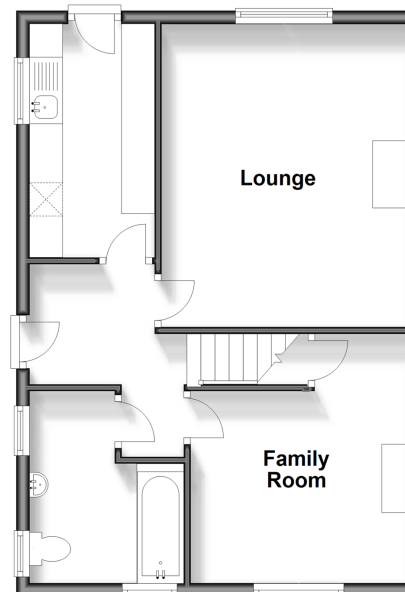
Garage

OUTSIDE

Rear Garden
Driveway

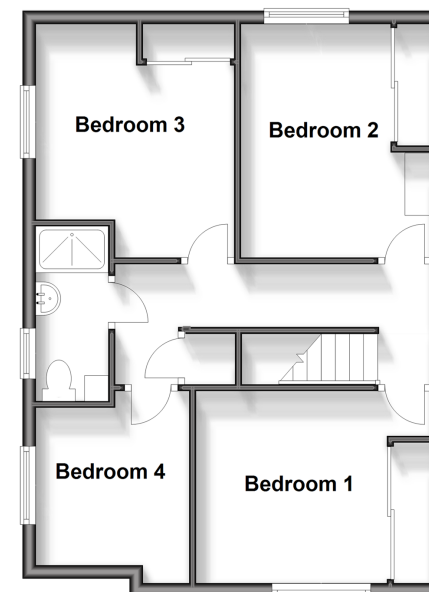
Ground Floor

Approx. 48.3 sq. metres (519.6 sq. feet)



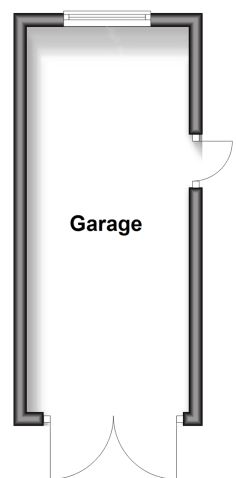
First Floor

Approx. 49.6 sq. metres (533.6 sq. feet)



Outbuilding

Approx. 14.2 sq. metres (153.0 sq. feet)



Call Ashford - 01233 639531 ■ wardsofkent.co.uk

■ Legal advice should be taken to verify fixtures/fittings, planning, alterations and/or lease details
■ Through a Homewise Home For Life Plan people aged 60+ can secure this property for up to 59% less, by purchasing a Lifetime Lease.

■ Appliances & services are untested, dimensions are approximate and floor plans are not to scale