



Price

£500,000

Freehold

4x  2x  1x 

**Robin Road, Finberry,
Ashford, Kent, TN25**

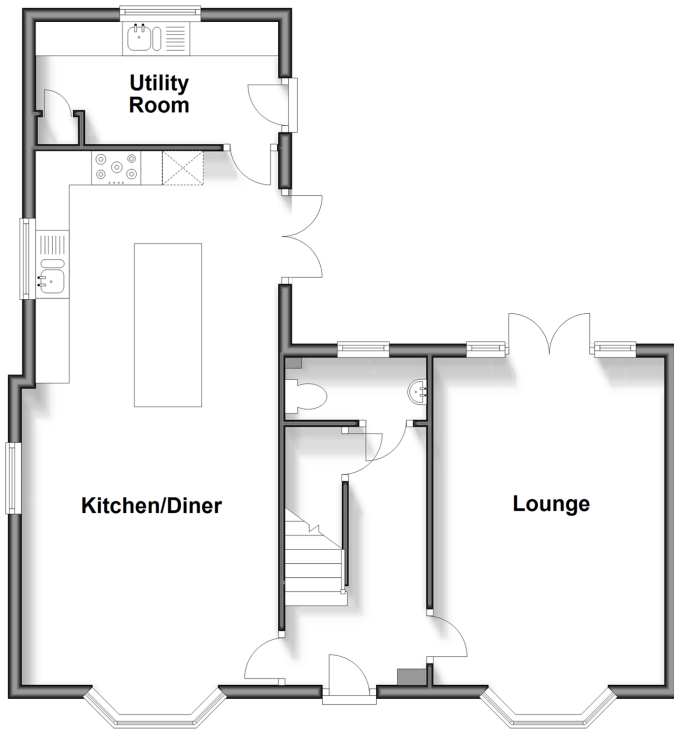
OVER 60?

Secure this property
for up to **59% less!**

Wards
Helping you move forwards

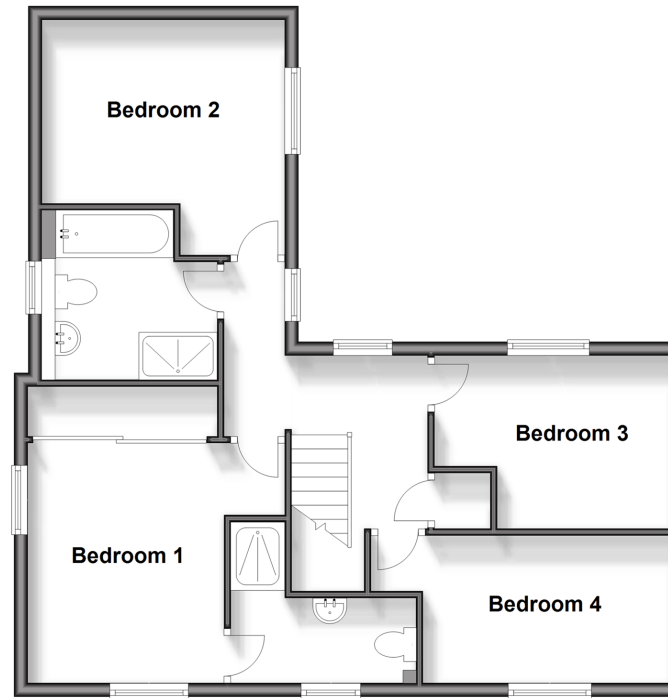
Ground Floor

Approx. 64.1 sq. metres (690.5 sq. feet)



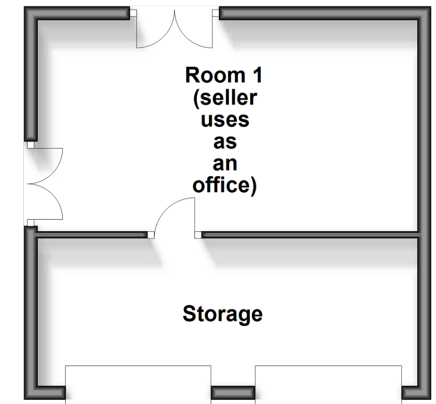
First Floor

Approx. 63.7 sq. metres (685.3 sq. feet)



Outbuilding

Approx. 30.2 sq. metres (325.4 sq. feet)



Accommodation

GROUND FLOOR

Entrance Hall
Cloakroom
Kitchen/Diner: 26'0 x 12'7 (7.93m x 3.84m)
Utility Room: 11'8 x 5'9 (3.56m x 1.75m)
Lounge: 15'8 x 11'2 (4.78m x 3.41m)

FIRST FLOOR

Landing
Bedroom 1: 16'4 x 11'9 (4.98m x 3.58m)
En-Suite Shower Room
Bedroom 2: 11'8 x 8'8 (3.56m x 2.64m)
Bedroom 3: 11'5 x 8'7 (3.48m x 2.62m)
Bedroom 4: 12'1 x 7'1 (3.69m x 2.16m)
Bathroom : 8'3 x 7'6 (2.52m x 2.29m)

OUTBUILDING

Room 1 (seller uses as office)
Storage

OUTSIDE

Front & Rear Gardens
Garage: 20'0 x 7'3 (6.10m x 2.21m)
Double Driveway



Main features

- Garage with double driveway
- All bedrooms are double in size
- Popular Finberry location
- Comes with over 5 years left on the buildings warranty
- Converted garage perfect for a gym or office space
- Close by to local schools



Nearest Schools

Primary Schools: Furley Park Primary 0.7 miles, East Stour Primary 0.9 miles, Kingsnorth C of E Primary 1.2 miles
Secondary Schools: John Wallis C of E Academy, Ashford 1.6 miles, The North School 1.8 miles, The Norton Knatchbull School 2.0 miles



Transport Information

Train Stations: Ashford International 1.9 miles, Ham Street 3.7 miles, Wye 4.9 miles



Address

Robin Road, Finberry, Ashford, Kent, TN25



Directions

For directions to this property please contact us.



Wards
Helping you move forwards

Call Ashford Branch 01233 639531 ■ wardsof Kent.co.uk



- Legal advice should be taken to verify fixtures/fittings, planning, alterations and/or lease details
- Appliances & services are untested, dimensions are approximate and floor plans are not to scale
- Through a Homewise Home For Life Plan people aged 60+ can secure this property for up to 59% less, by purchasing a Lifetime Lease.



12242767/20240716/MB/RB