



Price

£200,000

Leasehold

2x  2x  1x 

Orchard Court, Ashford,  
Kent, TN23

**OVER 60?**

Secure this property  
for up to **59% less!**

*Wards*  
Helping you move forwards



## Main features

- Modern gated development
- Allocated parking
- Family bathroom and en-suite shower room
- Short distance to town centre, amenities, schools and Ashford International Station
- All bedrooms are double in size

## Accommodation

### FIRST FLOOR

#### Hallway

Lounge: 14'0 x 13'6 (4.27m x 4.12m)

Kitchen: 8'5 x 5'8 (2.57m x 1.73m)

Bedroom 1: 10'9 x 8'6 (3.28m x 2.59m)

#### En-Suite Shower Room

Bedroom 2: 11'5 x 7'5 (3.48m x 2.26m)

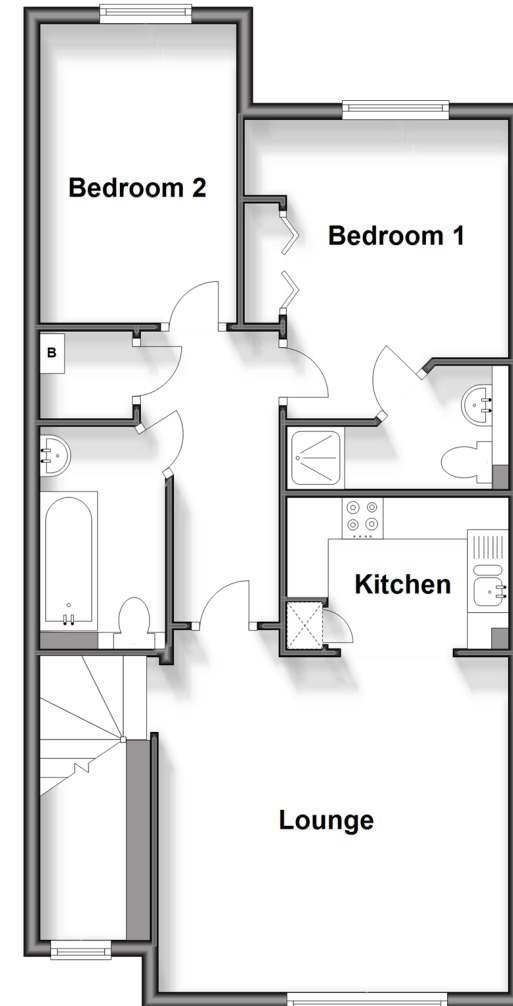
#### Bathroom

### OUTSIDE

Allocated Parking

## First Floor

Approx. 61.9 sq. metres (666.5 sq. feet)



**Call Ashford - 01233 639531 ■ [wardsof Kent.co.uk](http://wardsof Kent.co.uk)**

- Legal advice should be taken to verify fixtures/fittings, planning, alterations and/or lease details
- Appliances & services are untested, dimensions are approximate and floor plans are not to scale
- Through a Homewise Home For Life Plan people aged 60+ can secure this property for up to 59% less, by purchasing a Lifetime Lease.



12242773/20240822/JJ/RB