

OVER 60?

Secure this property
for up to **59% less!**



Price

£550,000

Freehold

4x  3x  2x 

Havillands Place, Wye, Ashford, Kent, TN25

Wards

Helping you move forwards

Accommodation

GROUND FLOOR

Entrance Hall

Cloakroom

Lounge: 17'2 x 11'8 (5.24m x 3.56m)

Family Area: 11'8 x 10'9 (3.56m x 3.28m)

Kitchen/Diner: 23'0 x 15'8 (7.02m x 4.78m)

FIRST FLOOR

Landing

Bedroom 1: 17'1 x 11'9 (5.21m x 3.58m)

En-Suite Shower Room

Bedroom 4: 12'7 x 12'3 (3.84m x 3.74m)

Bedroom 3: 19'9 x 8'4 (6.02m x 2.54m)

Bathroom: 8'7 x 8'0 (2.62m x 2.44m)

SECOND FLOOR

Landing

Bedroom 2: 11'9 x 11'3 (3.58m x 3.43m)

Dressing Area

En-Suite Shower Room 1: 7'2 x 5'5 (2.19m x 1.65m)

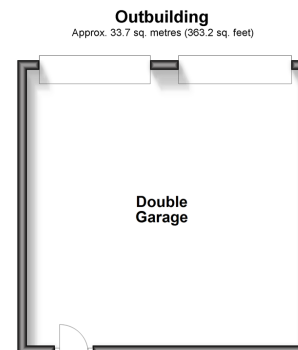
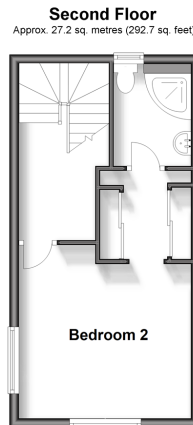
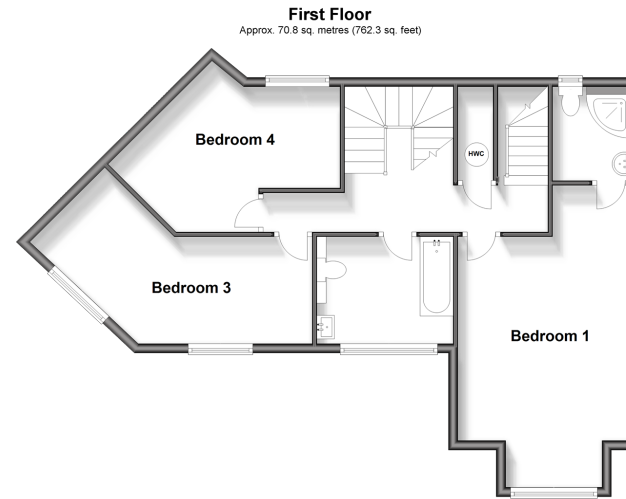
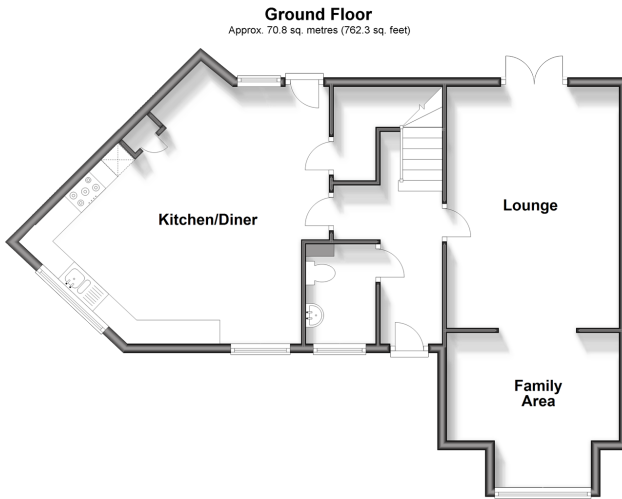
OUTBUILDING

Double Garage

OUTSIDE

Front & Rear Gardens

Off Road Parking





Main features

- Large kitchen/diner perfect for entertaining friends and family
- All bedrooms are double in size
- Large double garage
- Beautiful sought after location of Wye
- Short walking distance to Wye Train Station, doctors surgery, two outstanding schools and amenities



Nearest Schools

Primary Schools: Lady Joanna Thornhill Endowed Primary 0.8 miles, Kennington C of E Junior School 3.0 miles, Brook Community Primary 3.4 miles. Secondary Schools: The Towers School 3.2 miles, Highworth Grammar School for Girls 4.7 miles, Ashford School 4.7 miles.



Transport Information

Train Stations: Wye 0.0 miles, Ashford International 4.8 miles, Charing 6.2 miles



Address

Havillands Place, Wye, Ashford, Kent, TN25



Directions

For directions to this property please contact us.



Wards
Helping you move forwards

Call Ashford Branch 01233 639531 ■ wardsofkent.co.uk



■ Legal advice should be taken to verify fixtures/fittings, planning, alterations and/or lease details ■ Appliances & services are untested, dimensions are approximate and floor plans are not to scale
■ Through a Homewise Home For Life Plan people aged 60+ can secure this property for up to 59% less, by purchasing a Lifetime Lease.

EPC RATING Lightbulb icon 100%	CURRENT: C(30)	POTENTIAL: B(37)
--	--------------------------	----------------------------

12242731/20240604/MB/RB