



Price
£260,000

Freehold

2x  1x  1x 

**Kempes Place, Upper
Bridge Street, Wye,
Ashford, Kent, TN25**

OVER 60?

Secure this property
for up to **59% less!**

Wards
Helping you move forwards



Main features

- **Allocated parking**
- **2/3 bedrooms**
- **Possibility to add second bathroom**
- **Popular Wye location**
- **Close to amenities, doctors surgery, library and country walks**
- **Situated in a quiet cul-de-sac**
- **Over 55's only**

Accommodation

GROUND FLOOR

Entrance Porch
 Lounge/Diner: 19'5 x 10'10 (5.92m x 3.30m)
 Kitchen: 10'10 x 5'9 (3.30m x 1.75m)
 Bedroom 2: 12'10 x 9'10 (3.91m x 3.00m)
 Bathroom: 7'0 x 5'10 (2.14m x 1.78m)

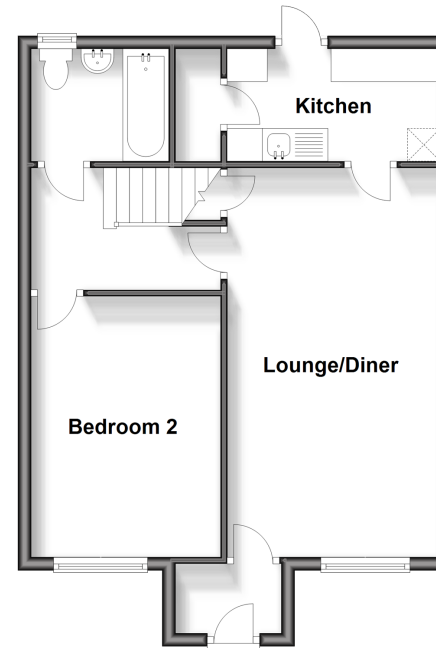
FIRST FLOOR

Landing
 Bedroom 1: 11'10 x 10'10 (3.61m x 3.30m)
 Dressing Room: 10'7 x 9'10 (3.23m x 3.00m)

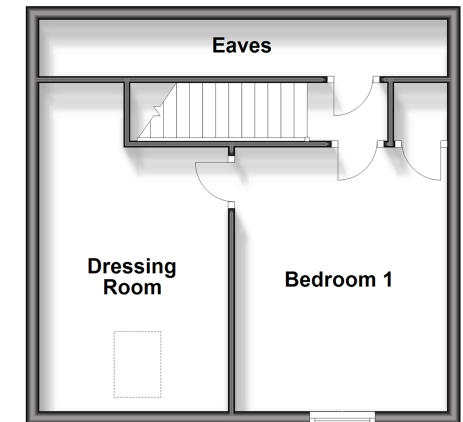
OUTSIDE

Communal Garden
 Allocated Parking Space

Ground Floor
 Approx. 50.2 sq. metres (540.7 sq. feet)



First Floor
 Approx. 37.3 sq. metres (401.3 sq. feet)



Call Ashford - 01233 639531 ■ wardsof Kent.co.uk

■ Legal advice should be taken to verify fixtures/fittings, planning, alterations and/or lease details
 ■ Through a Homewise Home For Life Plan people aged 60+ can secure this property for up to 59% less, by purchasing a Lifetime Lease.

■ Appliances & services are untested, dimensions are approximate and floor plans are not to scale



12242717/20241008/KM/RB