



Price

£750,000

Freehold

5x  3x  2x 

**Westwell Lane, Ashford,
Kent, TN25**

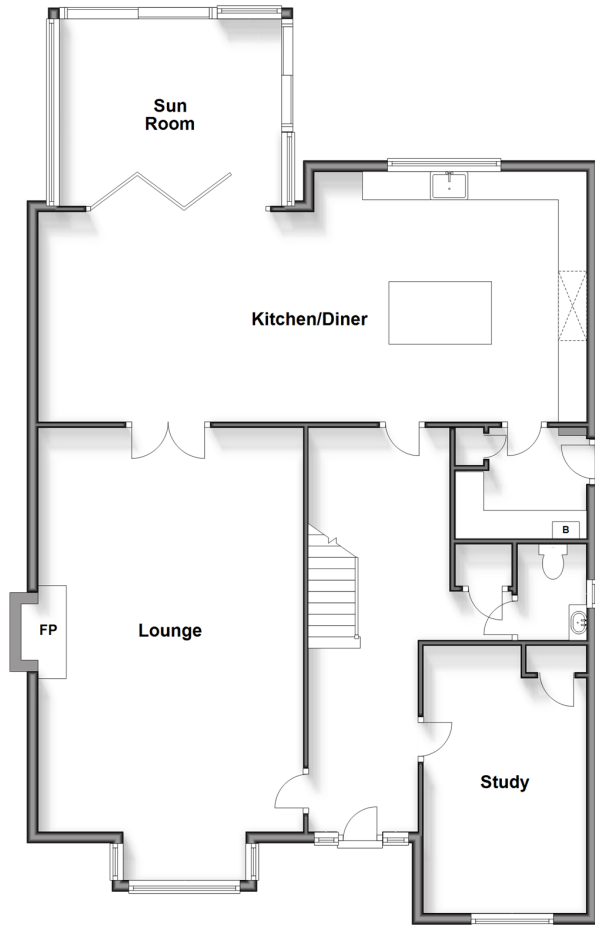
OVER 60?

Secure this property
for up to **59% less!**

Wards
Helping you move forwards

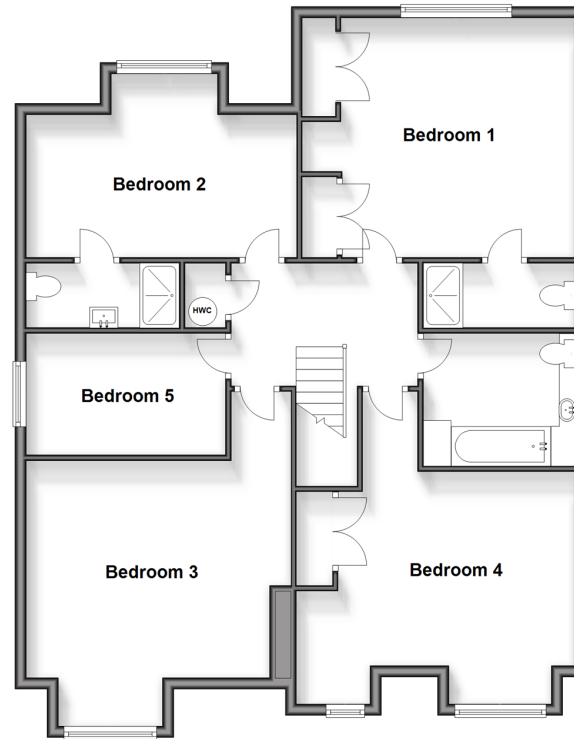
Ground Floor

Approx. 129.9 sq. metres (1398.7 sq. feet)



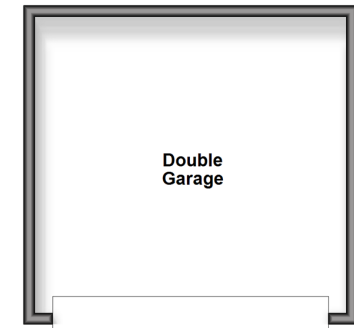
First Floor

Approx. 109.5 sq. metres (1178.8 sq. feet)



Outbuilding

Approx. 29.0 sq. metres (312.3 sq. feet)



Accommodation

GROUND FLOOR

Hallway

Lounge: 23'5 x 15'4 (7.14m x 4.68m)

Kitchen/Diner: 32'0 x 14'5 (9.76m x 4.40m)

Sun Room: 12'5 x 11'0 (3.79m x 3.36m)

Utility Room: 7'7 x 6'4 (2.31m x 1.93m)

Cloakroom

Study: 15'5 x 9'2 (4.70m x 2.80m)

FIRST FLOOR

Landing

Bedroom 1: 14'7 x 13'5 (4.45m x 4.09m)

En-Suite Shower Room

Bedroom 2: 15'6 x 8'1 (4.73m x 2.47m)

En-Suite Shower Room

Bedroom 3: 11'8 x 7'1 (3.56m x 2.16m)

Bedroom 4: 15'3 x 11'9 (4.65m x 3.58m)

Bedroom 5: 16'3 x 10'6 (4.96m x 3.20m)

Bathroom

OUTBUILDING

Double Garage

OUTSIDE

Rear Garden

Driveway for 10 cars



Main features

- Double garage with driveway parking for 10 cars
- Modern design throughout
- Under floor heating throughout the ground floor
- Great sized rear garden that gets plenty of sun throughout the day
- Close by to local woodland, perfect for family walks



Nearest Schools

Primary Schools: Challock Primary 0.8 miles, Charing C of E Aided Primary 2.7 miles, Kennington C of E Junior School 3.4 miles
Secondary Schools: The Towers School 3.1 miles, Goldwyn Community Special School 4.2 miles



Transport Information

Train Stations: Charing 2.9 miles, Wye 3.8 miles, Ashford International 5.0 miles



Address

Westwell Lane, Ashford, Kent, TN25



Directions

For directions to this property please contact us.



Wards
Helping you move forwards

Call Ashford Branch 01233 639531 ■ wardsofkent.co.uk



■ Legal advice should be taken to verify fixtures/fittings, planning, alterations and/or lease details ■ Appliances & services are untested, dimensions are approximate and floor plans are not to scale
■ Through a Homewise Home For Life Plan people aged 60+ can secure this property for up to 59% less, by purchasing a Lifetime Lease.



12242676/20241101/RB/RB