



Price
£375,000

Freehold

3x  2x  2x 

**Hedgers Way,
Kingsnorth, Ashford,
Kent, TN23**

OVER 60?

Secure this property
for up to **59% less!**

Wards
Helping you move forwards



Main features

- Situated in the popular Chartfield area
- Driveway with electric car charging point
- Under-floor heating in the kitchen and garden room
- Made to measure Roma kitchen
- Close to good schools and local amenities

Accommodation

GROUND FLOOR

Hallway
 Kitchen: 14'7 x 8'2 (4.45m x 2.49m)
 Lounge: 17'1 x 14'5 (5.21m x 4.40m)
 Garden Room: 17'8 x 9'5 (5.39m x 2.87m)
 Family Room: 17'6 x 8'8 (5.34m x 2.64m)

FIRST FLOOR

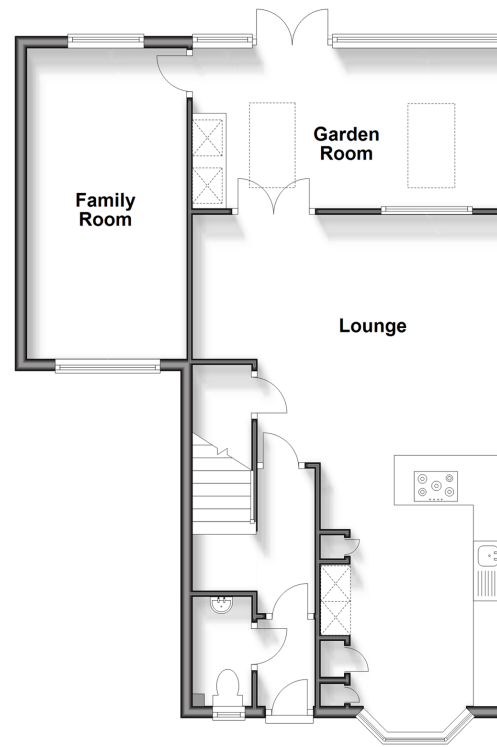
Landing
 Bedroom 1: 10'1 x 9'8 (3.08m x 2.95m)
 En-Suite Shower Room
 Bedroom 2: 12'7 x 10'5 (3.84m x 3.18m)
 Bedroom 3: 8'3 x 6'9 (2.52m x 2.06m)
 Bathroom: 6'7 x 6'3 (2.01m x 1.91m)

OUTSIDE

Front Garden
 Rear Garden
 Driveway

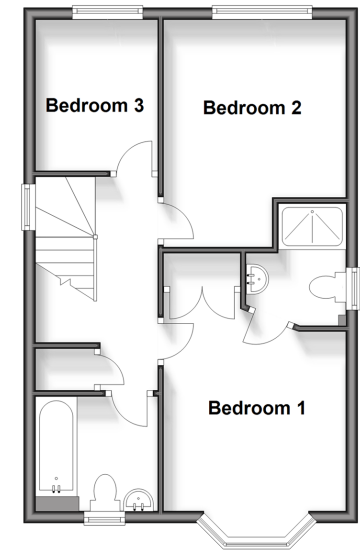
Ground Floor

Approx. 72.6 sq. metres (781.3 sq. feet)



First Floor

Approx. 43.2 sq. metres (464.9 sq. feet)



Call Ashford - 01233 639531 ■ wardsokent.co.uk

■ Legal advice should be taken to verify fixtures/fittings, planning, alterations and/or lease details
 ■ Through a Homewise Home For Life Plan people aged 60+ can secure this property for up to 59% less, by purchasing a Lifetime Lease.

■ Appliances & services are untested, dimensions are approximate and floor plans are not to scale



12242620/20240724/RB/RB