



Price
£585,000

Freehold

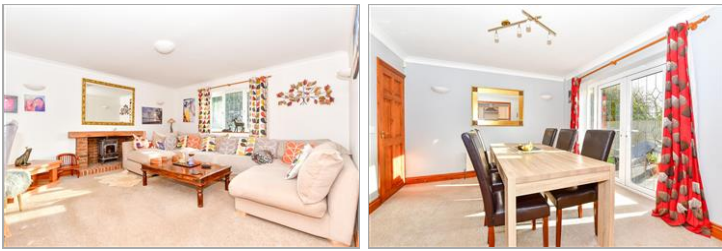
5x  3x  2x 

**The Bullrushes,
Bethersden Road,
Shadoxhurst, Ashford,
Kent, TN26**

OVER 60?

Secure this property
for up to **59% less!**

Wards
Helping you move forwards



Main features

- Situated in the heart of Shadoxhurst on the outskirts of Ashford
- Impressive corner plot with a large wrap-around garden
- The double garage and driveway provides ample parking for families
- Great space on the ground floor including a study and utility area
- Oil central heated

Accommodation

GROUND FLOOR

- Entrance Hall
- Cloakroom
- Study: 6'8 x 6'2 (2.03m x 1.88m)
- Lounge: 15'5 x 14'8 (4.70m x 4.47m)
- Dining Area: 11'4 x 11'4 (3.46m x 3.46m)
- Kitchen: 14'1 x 10'1 (4.30m x 3.08m)
- Utility: 9'7 x 5'9 (2.92m x 1.75m)

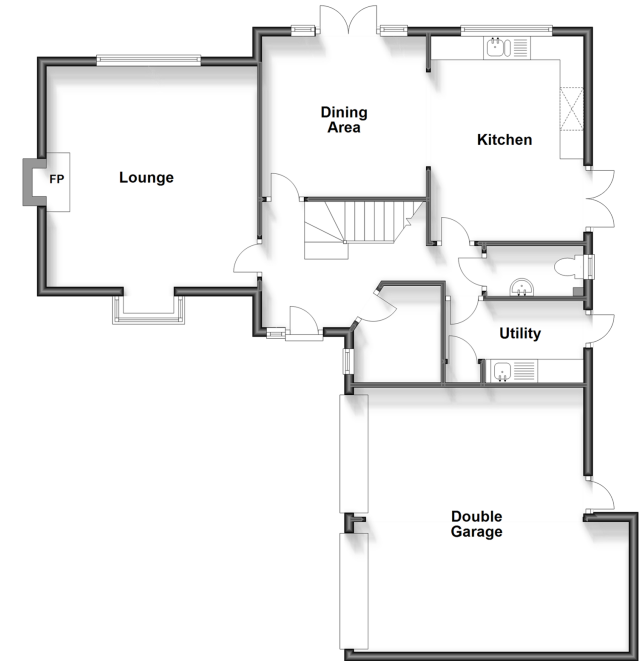
FIRST FLOOR

- Landing
- Bedroom 1: 14'3 x 13'4 (4.35m x 4.07m)
- En-Suite Shower Room
- Bedroom 2: 11'5 x 9'4 (3.48m x 2.85m)
- En-Suite Shower Room
- Bedroom 3: 12'8 x 8'2 (3.86m x 2.49m)
- Bedroom 4: 11'5 x 7'5 (3.48m x 2.26m)
- Bedroom 5: 11'6 x 6'11 (3.51m x 2.11m)
- Bathroom

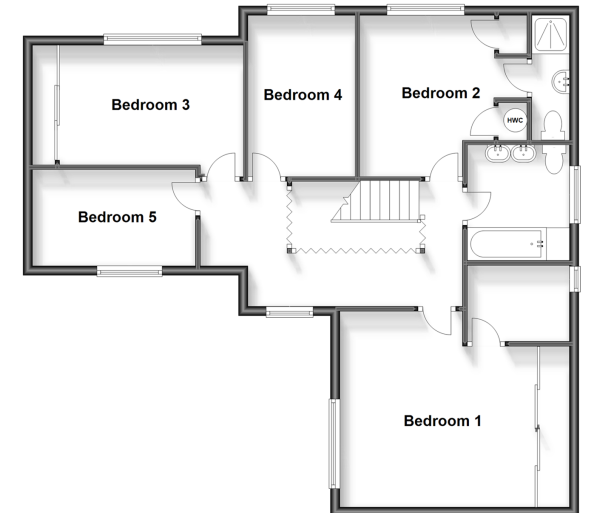
OUTSIDE

- Double Garage & Driveway
- Rear Garden

Ground Floor
Approx. 100.4 sq. metres (1080.4 sq. feet)



First Floor
Approx. 84.6 sq. metres (910.3 sq. feet)



Call Ashford - 01233 639531 ■ wardsof Kent.co.uk

- Legal advice should be taken to verify fixtures/fittings, planning, alterations and/or lease details
- Appliances & services are untested, dimensions are approximate and floor plans are not to scale
- Through a Homewise Home For Life Plan people aged 60+ can secure this property for up to 59% less, by purchasing a Lifetime Lease.



12242413/20240708/KM/CF