



Guide Price
£450,000

Leasehold

3x  1x  2x 

**Furze Hill Road,
Shanklin, Isle of Wight,
PO37**

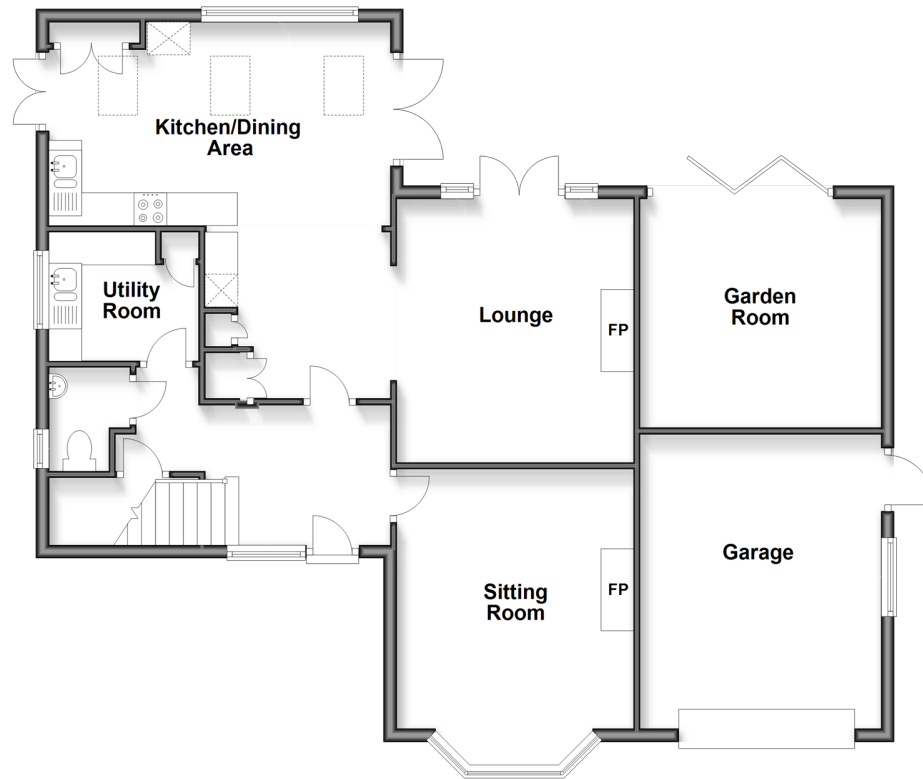
OVER 60?

Secure this property
for up to **59% less!**

Pittis 
Helping you move forwards

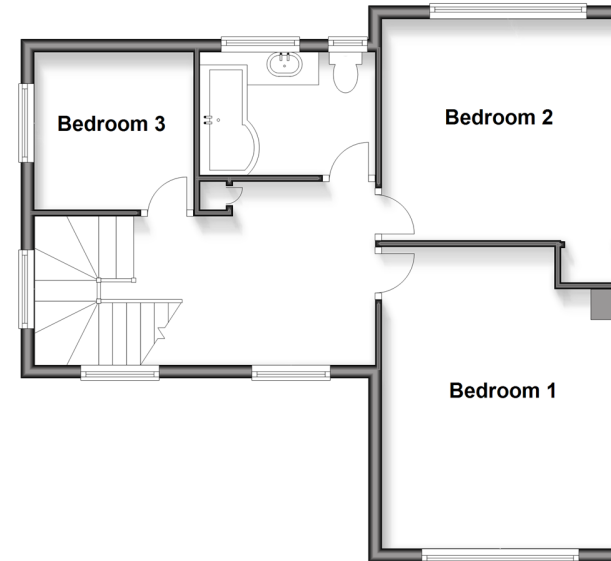
Ground Floor

Approx. 102.4 sq. metres (1102.1 sq. feet)



First Floor

Approx. 54.7 sq. metres (588.4 sq. feet)



Accommodation

GROUND FLOOR

Entrance Hall

Sitting Room: 13'3 x 10'9 (4.04m x 3.28m)

Lounge: 14'10 x 10'9 (4.52m x 3.28m)

Kitchen / Dining Area: 16'6 x 10'2 (5.03m x 3.10m)
plus 9'5 x 8'3 (2.87m x 2.52m)

Utility Room: 7'6 x 7'4 (2.29m x 2.24m)

Cloakroom

Garden Room: 12'3 x 11'5 (3.74m x 3.48m)

FIRST FLOOR

Landing: 9'9 x 5'11 (2.97m x 1.80m)

Bedroom 1: 15'3 x 11'11 (4.65m x 3.63m)

Bedroom 2: 11'11 x 11'1 (3.63m x 3.38m)

Bedroom 3: 8'6 x 7'11 (2.59m x 2.41m)

Bathroom

OUTSIDE

Front Garden

Rear Garden

Side Garden

Garage & Driveway



Main features

- Individual detached family home in a very sought after location
- Extended kitchen/dining area to the rear with utility room
- Lovely views towards Culver Down from the first floor
- Private walled garden to three sides including good sized patio area and garden room



Nearest Schools

The Bay CE School
Shanklin C of E Primary Schools
Gatten & Lake Primary School
Shanklin Pre-School & Nursery
Brading CE Primary School



Transport Information

Local buses providing Island wide connections plus local train station with direct links to Ryde Pier Head.



Address

Furze Hill Road, Shanklin, Isle of Wight, PO37



Directions

For directions to this property please contact us.

