



OVER 60?

Secure this property
for up to **59% less!**

Price

£310,000

Freehold

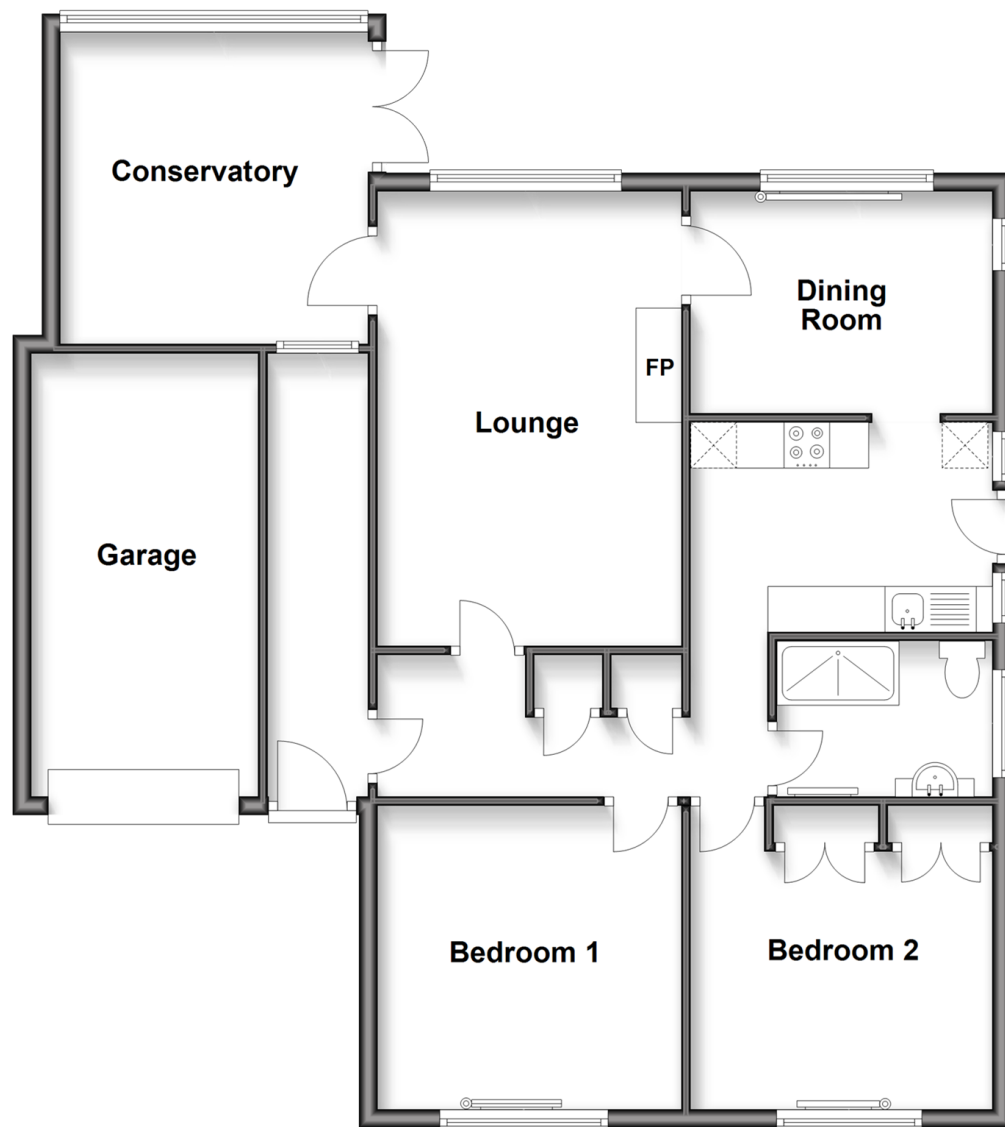
2x  1x  1x 

**Wheeler Way, Shanklin,
Isle of Wight, PO37**

Pittis 
Helping you move forwards

Ground Floor

Approx. 98.2 sq. metres (1056.7 sq. feet)



Accommodation

GROUND FLOOR

Hallway

Lounge: 15'10 x 10'11 (4.83m x 3.33m)

Conservatory: 11'0 x 10'6 (3.36m x 3.20m)

Dining Room: 10'10 x 7'11 (3.30m x 2.41m)

Kitchen: 11'2 x 7'2 (3.41m x 2.19m)

Bedroom 1: 10'10 x 10'10 (3.30m x 3.30m)

Bedroom 2: 10'10 x 10'9 (3.30m x 3.28m)

Shower Room

OUTSIDE

Front & Rear Gardens

Garage & Driveway



Main features

- Modern detached bungalow in a quiet cul de sac
- Conservatory to the rear overlooking the garden
- Good sized gardens to the front and rear
- Level access from the driveway with garage as well
- Ideal retirement home close to town



Nearest Schools

The Bay CE School
Shanklin C of E Primary Schools
Gatten & Lake Primary School
Shanklin Pre-School & Nursery
Brading CE Primary School



Transport Information

Local buses providing Island wide connections plus local train station with direct links to Ryde Pier Head.



Address

Wheeler Way, Shanklin, Isle of Wight, PO37



Directions

For directions to this property please contact us.

