



**Price**  
**£180,000**

**Leasehold**

2x  1x  1x 

**Deepdene, Victoria  
Avenue, Shanklin, Isle of  
Wight, PO37**

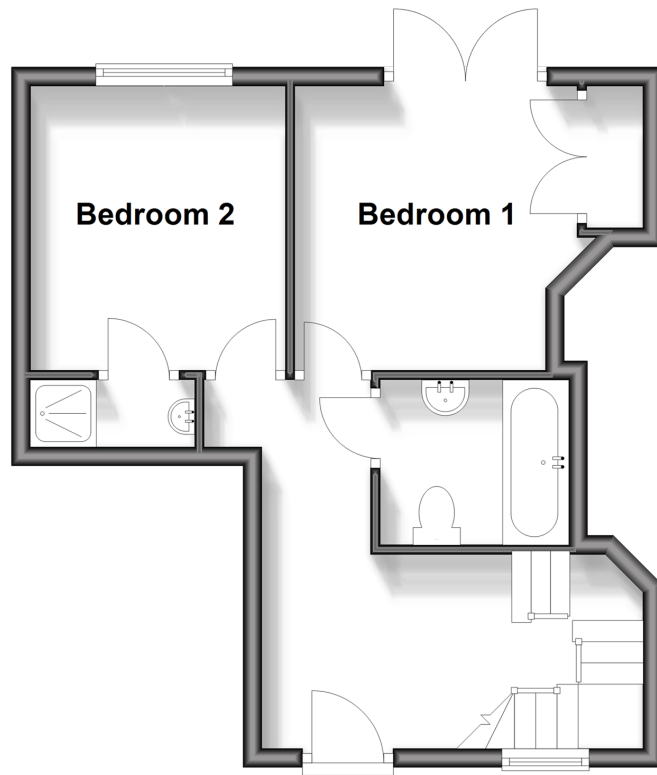
**OVER 60?**

Secure this property  
for up to **59% less!**

**Pittis**   
Helping you move forwards

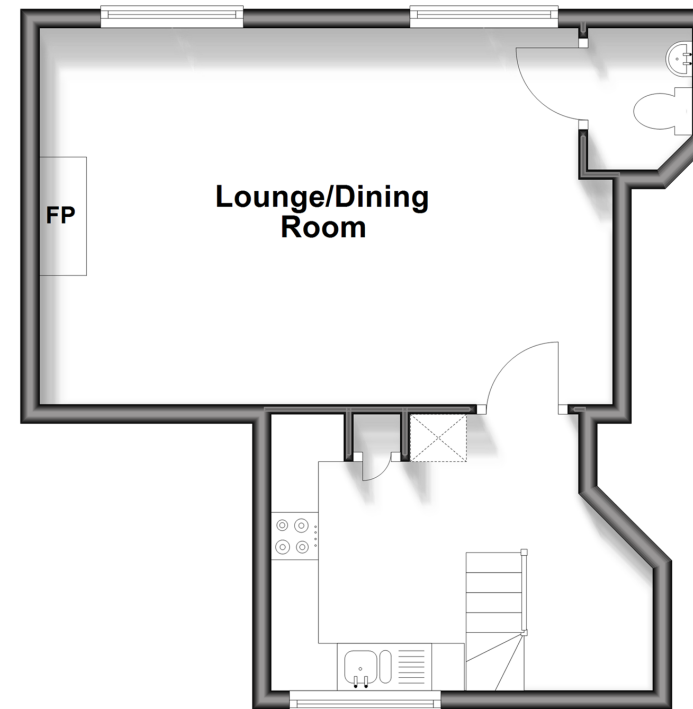
## Ground Floor

Approx. 34.6 sq. metres (372.6 sq. feet)



## First Floor

Approx. 36.4 sq. metres (392.3 sq. feet)



## Accommodation

### GROUND FLOOR

Hallway

Bedroom 1: 10'5 x 9'1 (3.18m x 2.77m)

Bedroom 2: 9'10 x 8'10 (3.00m x 2.69m)

En Suite Shower Room

Bathroom

### FIRST FLOOR

Landing

Lounge/Dining Room: 16'11 x 12'7 (5.16m x 3.84m)

Kitchen: 9'8 x 6'5 (2.95m x 1.96m)

Separate Toilet

### OUTSIDE

Patio Area

Communal Gardens

Allocated Parking



## Main features

- Unusual and quirky property in a sought after location
- Accommodation on two floors with a first floor lounge/dining room
- Private patio area and use of the communal gardens
- Parking to the front for one car
- Chain free sale



### Nearest Schools

The Bay CE School  
Shanklin C of E Primary Schools  
Gatten & Lake Primary School  
Shanklin Pre-School & Nursery  
Brading CE Primary School



### Transport Information

Local buses providing Island wide connections plus local train station with direct links to Ryde Pier Head.



### Address

Deepdene, Victoria Avenue, Shanklin, Isle of Wight, PO37



### Directions

For directions to this property please contact us.

