

OVER 60?

Secure this property
for up to **59% less!**



Price

£300,000

Freehold

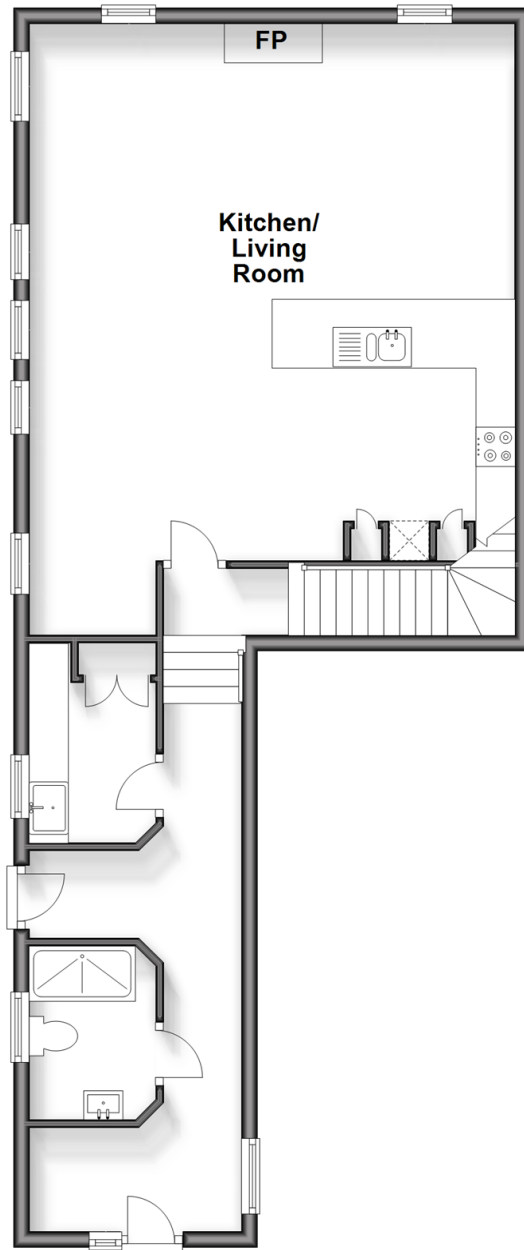
2x  2x  1x 

Newport Road, Apse Heath, Isle of Wight,
PO36

Pittis 
Helping you move forwards

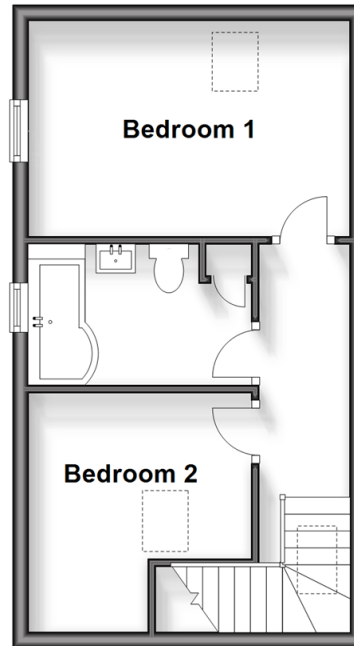
Ground Floor

Approx. 68.6 sq. metres (738.7 sq. feet)



First Floor

Approx. 31.8 sq. metres (342.7 sq. feet)



Accommodation

GROUND FLOOR

Entrance Hallway

Utility Room: 8'3 x 5'1 (2.52m x 1.55m)

Shower Room

Cloakroom

Kitchen / Living Room: 25'2 x 20'2 (7.68m x 6.15m)

FIRST FLOOR

Bedroom 1: 13'4 x 8'6 (4.07m x 2.59m)

Bedroom 2: 10'3 x 9'3 (3.13m x 2.82m)

Bathroom

OUTSIDE

Rear Garden

Under Ground Storage Area

Courtyard Area

Allocated Parking Space



Main features

- Stunning character home in a rural location
- Part of a luxury former church building conversion completed in 2021
- Bespoke interior with open plan vaulted living area and feature fire place
- Private garden to the rear overlooking farmland
- Perfect life style purchase or holiday let proposition, chain free sale

Nearest Schools

Primary Schools: Lake Middle School 0.9 miles, Sandham Middle School 1.7 miles, Ventnor Middle School 3.3 miles

Secondary Schools: Sandown High School 1.6 miles, Priory School 2.0 miles, St Catherine's School 3.5 miles

Transport Information

Train Stations: Lake 1.7 miles, Shanklin 2.0 miles, Sandown 2.2 miles

Address

Newport Road, Apse Heath, Isle of Wight, PO36

Directions

For directions to this property please contact us.



Call Shanklin Branch 01983 868777 ■ pittis.co.uk



- Legal advice should be taken to verify fixtures/fittings, planning, alterations and/or lease details
- Appliances & services are untested, dimensions are approximate and floor plans are not to scale
- Through a Homewise Home For Life Plan people aged 60+ can secure this property for up to 59% less, by purchasing a Lifetime Lease.

EPC RATING	CURRENT:	POTENTIAL:

60620166/20240930/CS/CS