



OVER 60?

Secure this property
for up to **59% less!**

Price

£245,000

Freehold

2x  1x  1x 

**Green Lane, Shanklin,
Isle of Wight, PO37**

Pittis 
Helping you move forwards



Main features

- Modern mid terraced bungalow in popular location
- Immaculately presented throughout
- Easy to maintain rear garden and plenty of parking
- Short walk to bus stop and cliff top paths
- Large walk in dressing room

Accommodation

GROUND FLOOR

Porch

Hallway

Kitchen: 10'1 x 8'1 (3.08m x 2.47m)

Bedroom 2: 11'11 x 5'6 (3.63m x 1.68m)

Lounge: 16'8 x 10'4 (5.08m x 3.15m)

Study/Dressing Room: 6'2 x 5'5 (1.88m x 1.65m)

Bedroom 1: 13'2 x 8'8 (4.02m x 2.64m)

Shower Room

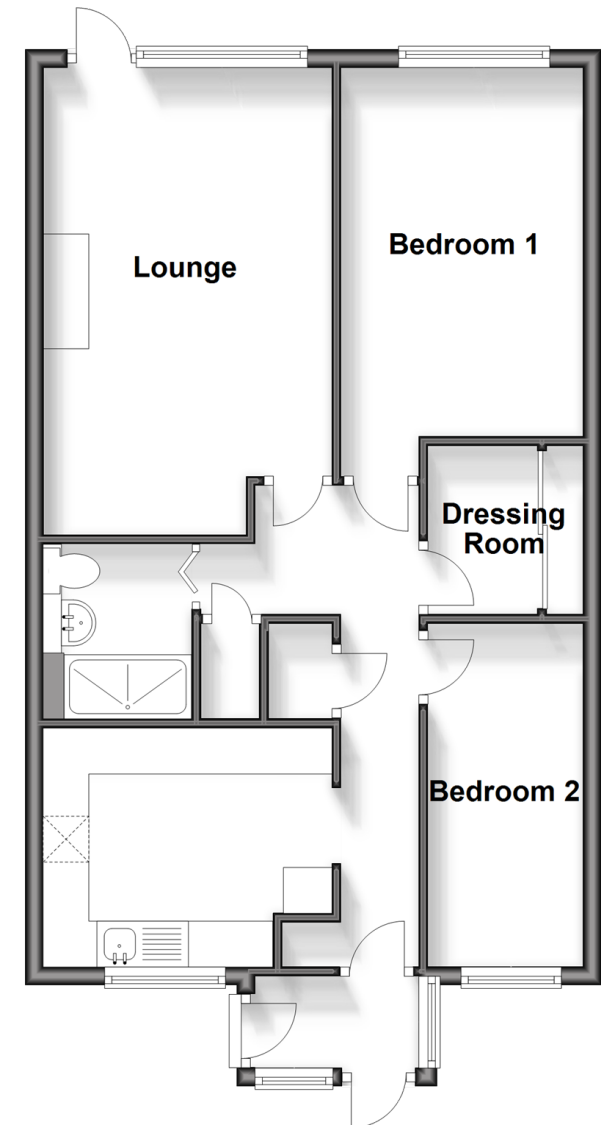
OUTSIDE

Driveway

Rear Garden

Ground Floor

Approx. 59.8 sq. metres (644.2 sq. feet)



Call Shanklin - 01983 868777 ■ pittis.co.uk

- Legal advice should be taken to verify fixtures/fittings, planning, alterations and/or lease details
- Appliances & services are untested, dimensions are approximate and floor plans are not to scale
- Through a Homewise Home For Life Plan people aged 60+ can secure this property for up to 59% less, by purchasing a Lifetime Lease.