



Price
£350,000

Freehold

3x  1x  1x 

**Downland View,
Shanklin, Isle of Wight,
PO37**

OVER 60?

Secure this property
for up to **59% less!**


Pittis
Helping you move forwards



Main features

- Detached bungalow in sought after location
- Gorgeous conservatory to the rear overlooking the garden
- Close to local shops and town centre
- Lovely front and rear gardens
- Integral garage and chain free sale

Accommodation

GROUND FLOOR

Porch

Hallway

Lounge: 22'6 x 12'3 (6.86m x 3.74m)

Kitchen: 9'10 x 9'1 (3.00m x 2.77m)

Bedroom 1: 12'2 x 9'10 (3.71m x 3.00m)

Bedroom 2: 9'11 x 9'10 (3.02m x 3.00m)

Bedroom 3/ Dining Room: 9'11 x 9'1 (3.02m x 2.77m)

Conservatory: 11'10 x 9'8 (3.61m x 2.95m)

Bathroom

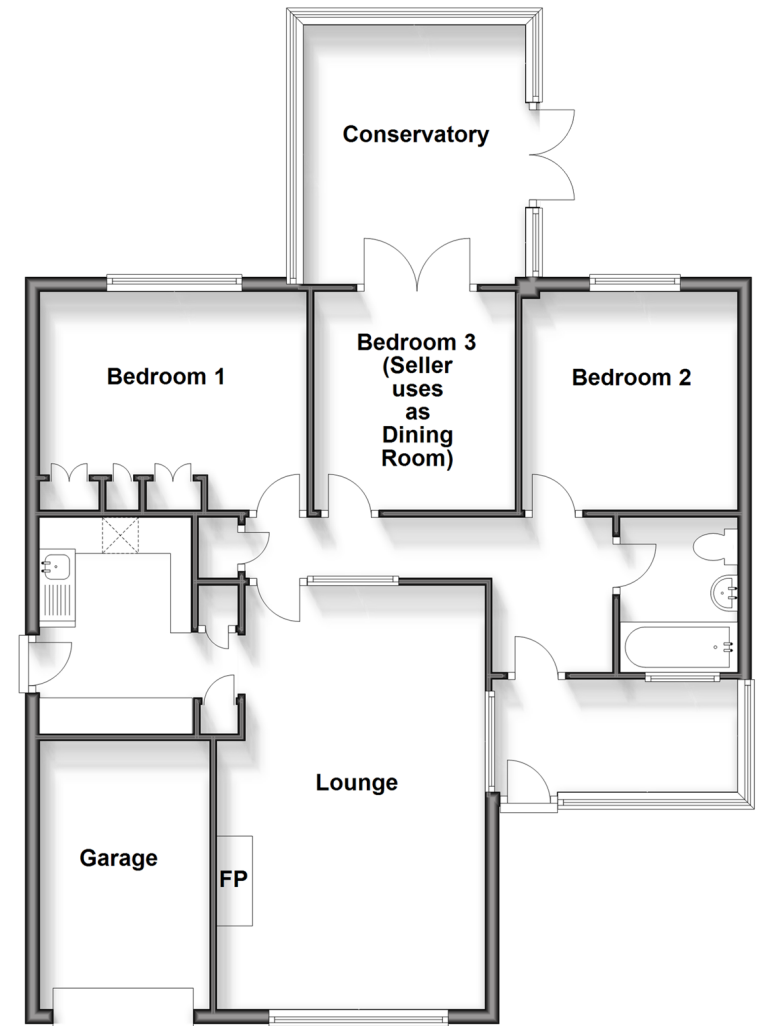
OUTSIDE

Garage & Driveway

Front & Rear Gardens

Ground Floor

Approx. 98.1 sq. metres (1056.4 sq. feet)



Call Shanklin - 01983 868777 ■ pittis.co.uk

- Legal advice should be taken to verify fixtures/fittings, planning, alterations and/or lease details
- Appliances & services are untested, dimensions are approximate and floor plans are not to scale
- Through a Homewise Home For Life Plan people aged 60+ can secure this property for up to 59% less, by purchasing a Lifetime Lease.



60620091/20240521/DW/CS