

**OVER 60?**

Secure this property  
for up to **59% less!**



**Price**

**£340,000**

**Freehold**

3x  1x  2x 

Whitecross Farm Lane, Sandown, Isle of  
Wight, PO36

**Pittis**   
Helping you move forwards

## Accommodation

### GROUND FLOOR

Hallway

Kitchen: 17'4 x 9'0 (5.29m x 2.75m)

Utility Room

Cloakroom

Breakfast Room: 10'0 x 9'11 (3.05m x 3.02m)

Dining Area: 13'5 x 10'11 (4.09m x 3.33m)

Lounge: 12'11 x 11'10 (3.94m x 3.61m)

### FIRST FLOOR

Landing

Bedroom 1: 13'5 x 10'11 (4.09m x 3.33m)

Bedroom 2: 11'11 x 10'6 (3.63m x 3.20m)

Bedroom 3: 10'1 x 8'10 (3.08m x 2.69m)

Bathroom

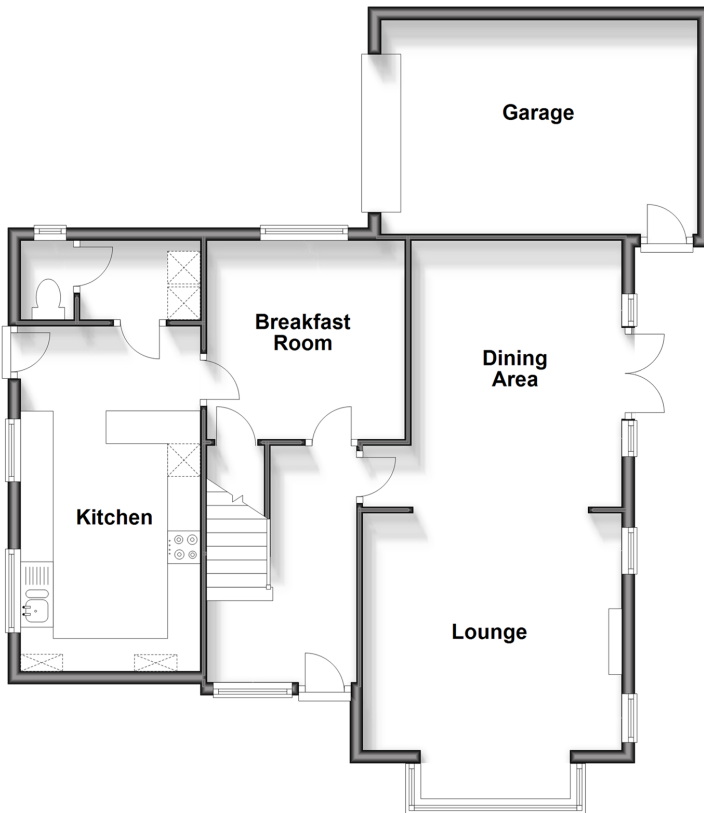
### OUTSIDE

Front & Rear Gardens

Garage & Driveway

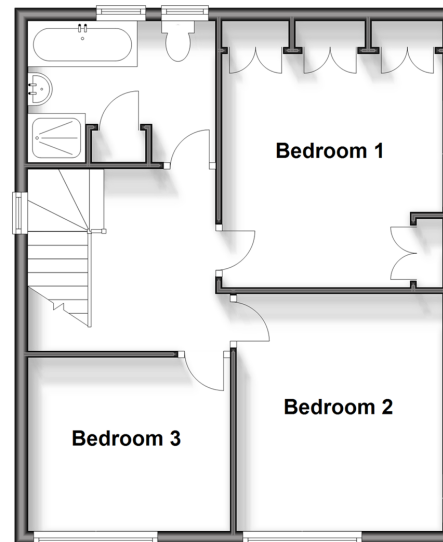
### Ground Floor

Approx. 83.0 sq. metres (893.2 sq. feet)



### First Floor

Approx. 49.6 sq. metres (533.8 sq. feet)





## Main features

- Detached character house in a tucked away quiet location
- Lovely wrap around gardens with summer house
- Garage and driveway offering parking for multiple vehicles
- In need of some modernisation
- Chain free sale



### Nearest Schools

The Bay CE School  
Broadlea Primary School  
Shanklin C of E Primary Schools  
Gatten & Lake Primary School  
Shanklin Pre-School & Nursery



### Transport Information

Local buses providing Islandwide connections plus local train station with direct links to Ryde Pier Head.



### Address

Whitecross Farm Lane, Sandown, Isle of Wight, PO36



### Directions

For directions to this property please contact us.

